

Product Name: NDUFA4L2 Rabbit Polyclonal Antibody
Catalog #: APRab14499



Summary

Production Name	NDUFA4L2 Rabbit Polyclonal Antibody
Description	Rabbit Polyclonal Antibody
Host	Rabbit
Application	WB,ELISA
Reactivity	Human,Mouse

Performance

Conjugation	Unconjugated
Modification	Unmodified
Isotype	IgG
Clonality	Polyclonal
Form	Liquid
Storage	Store at 4°C short term. Aliquot and store at -20°C long term. Avoid freeze/thaw cycles.
Buffer	Liquid in PBS containing 50% glycerol, 0.5% BSA and 0.02% New type preservative N.
Purification	Affinity purification

Immunogen

Gene Name	NDUFA4L2
Alternative Names	NDUFA4L2; NADH dehydrogenase [ubiquinone] 1 alpha subcomplex subunit 4-like 2; NADH-ubiquinone oxidoreductase MLRQ subunit homolog; NUOMS
Gene ID	56901.0
SwissProt ID	Q9NRX3.The antiserum was produced against synthesized peptide derived from human NDUFA4L2. AA range:38-87

Application

Dilution Ratio	WB 1:500-1:2000, ELISA 1:20000.Not yet tested in other applications.
Molecular Weight	15kDa

Product Name: NDUFA4L2 Rabbit Polyclonal Antibody
Catalog #: APRab14499



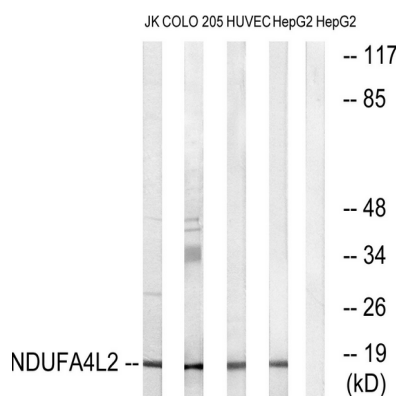
Background

similarity:Belongs to the complex I NDUFA4 subunit family.,similarity:Belongs to the complex I NDUFA4 subunit family.,

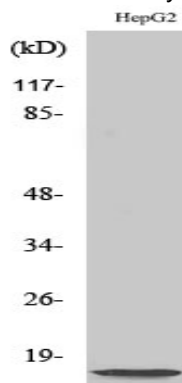
Research Area

Oxidative phosphorylation;Alzheimer's disease;Parkinson's disease;Huntington's disease;

Image Data



Western blot analysis of lysates from HepG2, HUVEC, COLO, and Jurkat cells, using NDUFA4L2 Antibody. The lane on the right is blocked with the synthesized peptide.



Western Blot analysis of various cells using NDUFA4L2 Polyclonal Antibody diluted at 1: 2000

Note

For research use only.