

Summary

Production Name	NCKX6 Rabbit Polyclonal Antibody
Description	Rabbit Polyclonal Antibody
Host	Rabbit
Application	WB,IHC-P,IF-P,IF-F,ICC/IF,ELISA
Reactivity	Human,Rat,Mouse

Performance

Conjugation	Unconjugated
Modification	Unmodified
Isotype	IgG
Clonality	Polyclonal
Form	Liquid
Storage	Store at 4°C short term. Aliquot and store at -20°C long term. Avoid freeze/thaw cycles.
Buffer	Liquid in PBS containing 50% glycerol, 0.5% BSA and 0.02% New type preservative N.
Purification	Affinity purification

Immunogen

Gene Name	SLC24A6
Alternative Names	SLC24A6; NCKX6; NCLX; Sodium/potassium/calcium exchanger 6; Na(+)/K(+)/Ca(2+)-exchange protein 6; Solute carrier family 24 member 6
Gene ID	80024.0
SwissProt ID	Q6J4K2.The antiserum was produced against synthesized peptide derived from human SLC24A6. AA range:494-543

Application

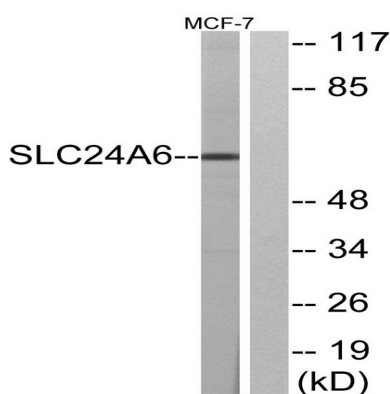
Dilution Ratio	WB 1:500-1:2000, ELISA 1:20000, IF-P/IF-F/ICC/IF 1:50-200
Molecular Weight	60kDa

Background

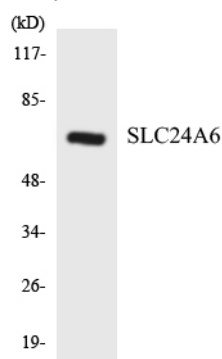
SLC24A6 belongs to a family of potassium-dependent sodium/calcium exchangers that maintain cellular calcium homeostasis through the electrogenic countertransport of 4 sodium ions for 1 calcium ion and 1 potassium ion (Cai and Lytton, 2004 [PubMed 14625281]).[supplied by OMIM, Mar 2008],function:Transports Ca(2+) in exchange for either Li(+) or Na(+), explaining how Li(+) catalyzes Ca(2+) exchange. In contrast to other members of the family its function is independent of K(+),miscellaneous:Strongly inhibited by zinc.,similarity:Belongs to the sodium/potassium/calcium exchanger family. SLC24A subfamily.,

Research Area

Image Data



Western blot analysis of lysates from MCF-7 cells, using SLC24A6 Antibody. The lane on the right is blocked with the synthesized peptide.



Western blot analysis of the lysates from HeLa cells using SLC24A6 antibody.

Note

For research use only.