

Product Name: NCAM2 Rabbit Polyclonal Antibody
Catalog #: AP Rab14437



Summary

Production Name	NCAM2 Rabbit Polyclonal Antibody
Description	Rabbit Polyclonal Antibody
Host	Rabbit
Application	WB,IHC-P
Reactivity	Human,Mouse,Rat

Performance

Conjugation	Unconjugated
Modification	Unmodified
Isotype	IgG
Clonality	Polyclonal
Form	Liquid
Storage	Store at 4°C short term. Aliquot and store at -20°C long term. Avoid freeze/thaw cycles.
Buffer	Liquid in PBS containing 50% glycerol, 0.5% BSA and 0.02% New type preservative N.
Purification	Affinity purification

Immunogen

Gene Name	NCAM2
Alternative Names	NCAM2; NCAM21; Neural cell adhesion molecule 2; N-CAM-2; NCAM-2
Gene ID	4685.0
SwissProt ID	O15394. The antiserum was produced against synthesized peptide derived from human NCAM2. AA range:264-313

Application

Dilution Ratio	WB 1:500-2000, IHC-P 1:50-300
Molecular Weight	100kDa

Background

The protein encoded by this gene belongs to the immunoglobulin superfamily. It is a type I membrane protein and may

Product Name: NCAM2 Rabbit Polyclonal Antibody
Catalog #: APRab14437

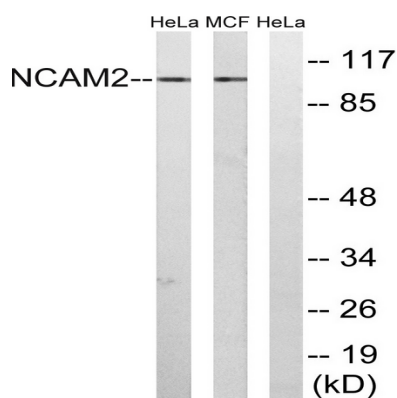


function in selective fasciculation and zone-to-zone projection of the primary olfactory axons. [provided by RefSeq, Jul 2008],function:May play important roles in selective fasciculation and zone-to-zone projection of the primary olfactory axons.,similarity:Contains 2 fibronectin type-III domains.,similarity:Contains 5 Ig-like C2-type (immunoglobulin-like) domains.,tissue specificity:Expressed most strongly in adult and fetal brain.,

Research Area

Cell adhesion molecules (CAMs);Prion diseases;

Image Data



Western blot analysis of lysates from MCF-7 and HeLa cells, using NCAM2 Antibody. The lane on the right is blocked with the synthesized peptide.

Note

For research use only.