

Product Name: NBEAL1 Rabbit Polyclonal Antibody
Catalog #: AP Rab14422



Summary

| | |
|------------------------|-----------------------------------|
| Production Name | NBEAL1 Rabbit Polyclonal Antibody |
| Description | Rabbit Polyclonal Antibody |
| Host | Rabbit |
| Application | WB,IHC-P,IF-P,IF-F,ICC/IF,ELISA |
| Reactivity | Human,Rat,Mouse |

Performance

| | |
|---------------------|--|
| Conjugation | Unconjugated |
| Modification | Unmodified |
| Isotype | IgG |
| Clonality | Polyclonal |
| Form | Liquid |
| Storage | Store at 4°C short term. Aliquot and store at -20°C long term. Avoid freeze/thaw cycles. |
| Buffer | Liquid in PBS containing 50% glycerol, 0.5% BSA and 0.02% New type preservative N. |
| Purification | Affinity purification |

Immunogen

| | |
|--------------------------|---|
| Gene Name | NBEAL1 |
| Alternative Names | NBEAL1; ALS2CR16; ALS2CR17; Neurobeachin-like protein 1; Amyotrophic lateral sclerosis 2 chromosomal region candidate gene 16 protein; Amyotrophic lateral sclerosis 2 chromosomal region candidate gene 17 protein |
| Gene ID | 65065.0 |
| SwissProt ID | Q6ZS30.The antiserum was produced against synthesized peptide derived from human NBEAL1. AA range:566-615 |

Application

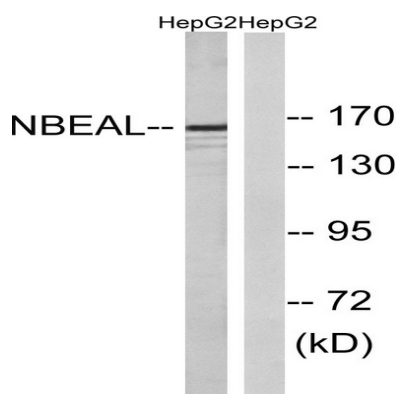
| | |
|-------------------------|--|
| Dilution Ratio | WB 1:500-1:2000, IHC-P 1:100-1:300, ELISA 1:10000, IF-P/IF-F/ICC/IF 1:50-200 |
| Molecular Weight | 160kDa |

Background

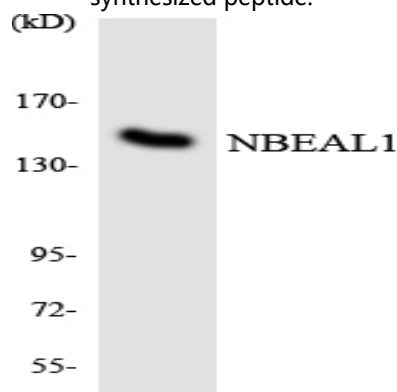
sequence caution:Translated as stop.,similarity:Belongs to the WD repeat neurobeachin family.,similarity:Contains 1 BEACH domain.,similarity:Contains 2 WD repeats.,tissue specificity:Highly expressed in brain, kidney, prostate and testis. Weakly expressed in ovary, small intestine, colon and peripheral blood leukocytes. May be correlative to several tumors, such as ovary serous adenocarcinoma and metastasis mammary gland carcinoma breast.,sequence caution:Translated as stop.,similarity:Belongs to the WD repeat neurobeachin family.,similarity:Contains 1 BEACH domain.,similarity:Contains 2 WD repeats.,tissue specificity:Highly expressed in brain, kidney, prostate and testis. Weakly expressed in ovary, small intestine, colon and peripheral blood leukocytes. May be correlative to several tumors, such as ovary serous adenocarcinoma and metastasis mammary gland carcinoma breast.,

Research Area

Image Data



Western blot analysis of lysates from HepG2 cells, using NBEAL1 Antibody. The lane on the right is blocked with the synthesized peptide.



Western blot analysis of the lysates from HeLa cells using NBEAL1 antibody.

Product Name: NBEAL1 Rabbit Polyclonal Antibody
Catalog #: APRab14422



Note

For research use only.