

Product Name: Na⁺ CP type II β Rabbit Polyclonal Antibody
Catalog #: APRab14373

Summary

| | |
|------------------------|---|
| Production Name | Na ⁺ CP type II β Rabbit Polyclonal Antibody |
| Description | Rabbit Polyclonal Antibody |
| Host | Rabbit |
| Application | WB,ELISA,IHC-P |
| Reactivity | Human,Mouse,Rat |

Performance

| | |
|---------------------|--|
| Conjugation | Unconjugated |
| Modification | Unmodified |
| Isotype | IgG |
| Clonality | Polyclonal |
| Form | Liquid |
| Storage | Store at 4°C short term. Aliquot and store at -20°C long term. Avoid freeze/thaw cycles. |
| Buffer | Liquid in PBS containing 50% glycerol, 0.5% BSA and 0.02% New type preservative N. |
| Purification | Affinity purification |

Immunogen

| | |
|--------------------------|---|
| Gene Name | SCN2B |
| Alternative Names | SCN2B; Sodium channel subunit beta-2 |
| Gene ID | 6327.0 |
| SwissProt ID | O60939.The antiserum was produced against synthesized peptide derived from human SCN2B. AA range:71-120 |

Application

| | |
|-------------------------|---|
| Dilution Ratio | WB 1:500-2000, IHC-P 1:50-300, ELISA 2000-20000 |
| Molecular Weight | 24kDa |

Product Name: Na⁺ CP type II β Rabbit Polyclonal Antibody
Catalog #: AP Rab14373

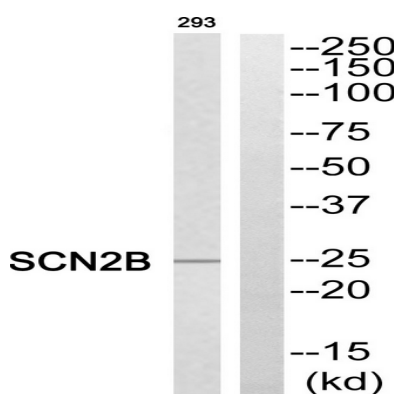


Background

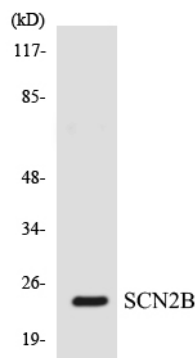
The protein encoded by this gene is the beta 2 subunit of the type II voltage-gated sodium channel. The encoded protein is involved in cell-cell adhesion and cell migration. Defects in this gene can be a cause of Brugada Syndrome, atrial fibrillation, or sudden infant death syndrome. [provided by RefSeq, Jul 2015],function:Crucial in the assembly, expression, and functional modulation of the heterotrimeric complex of the sodium channel. The subunit beta-2 causes an increase in the plasma membrane surface area and in its folding into microvilli. Interacts with TNR may play a crucial role in clustering and regulation of activity of sodium channels at nodes of Ranvier.,similarity:Contains 1 Ig-like C2-type (immunoglobulin-like) domain.,subunit:The sodium channel consists of a pore-forming alpha subunit, beta-1 and beta-2 subunits. Beta-1 is non-covalently associated with alpha, while beta-2 is covalently linked by disulfide bonds. Interaction with SCN10A and TNR.,tissue specificity:Brain specific.,

Research Area

Image Data

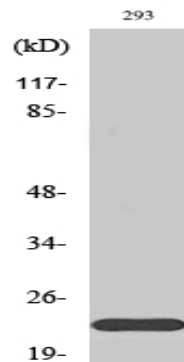


Western blot analysis of SCN2B Antibody. The lane on the right is blocked with the SCN2B peptide.



Western blot analysis of the lysates from HepG2 cells using SCN2B antibody.

Product Name: Na⁺ CP type II β Rabbit Polyclonal Antibody
Catalog #: APRab14373



Western Blot analysis of various cells using Na⁺ CP type II β Polyclonal Antibody

Note

For research use only.