

## Summary

<b>Production Name</b>	MYPT3 Rabbit Polyclonal Antibody
<b>Description</b>	Rabbit Polyclonal Antibody
<b>Host</b>	Rabbit
<b>Application</b>	WB,IF-P,IF-F,ICC/IF,ELISA,IHC-P
<b>Reactivity</b>	Human,Rat,Mouse

## Performance

<b>Conjugation</b>	Unconjugated
<b>Modification</b>	Unmodified
<b>Isotype</b>	IgG
<b>Clonality</b>	Polyclonal
<b>Form</b>	Liquid
<b>Storage</b>	Store at 4°C short term. Aliquot and store at -20°C long term. Avoid freeze/thaw cycles.
<b>Buffer</b>	Liquid in PBS containing 50% glycerol, 0.5% BSA and 0.02% New type preservative N.
<b>Purification</b>	Affinity purification

## Immunogen

<b>Gene Name</b>	PPP1R16A
<b>Alternative Names</b>	PPP1R16A; MYPT3; Protein phosphatase 1 regulatory subunit 16A; Myosin phosphatase-targeting subunit 3
<b>Gene ID</b>	84988.0
<b>SwissProt ID</b>	Q96I34.The antiserum was produced against synthesized peptide derived from human PPP1R16A. AA range:362-411

## Application

<b>Dilution Ratio</b>	WB 1:500-2000, IF-P/IF-F/ICC/IF/ICC 1:50-200, ELISA 1:2000-20000, IHC-P 1:50-200
<b>Molecular Weight</b>	60kDa

**Product Name: MYPT3 Rabbit Polyclonal Antibody**  
**Catalog #: AP Rab14356**

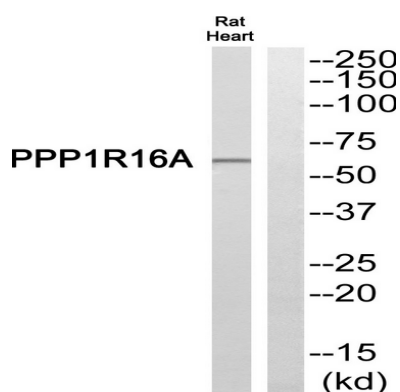


## Background

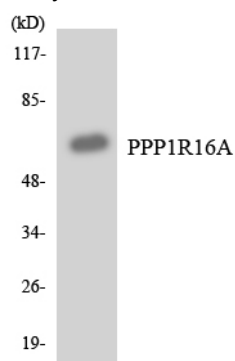
Myosin light chain kinase and phosphatase (MLCP) complexes control the phosphorylation states of regulatory myosin light chains, which is crucial for muscle and intracellular movement. MLCPs typically contain a catalytic protein phosphatase 1 (PP1c) subunit, a myosin phosphatase targeting (MYPT) subunit, and another smaller subunit. The protein encoded by this gene represents an MYPT subunit, which is responsible for directing PP1c to its intended targets. However, while other MYPTs result in PP1c activation after becoming phosphorylated, the encoded protein is phosphorylated by protein kinase A and then inhibits the catalytic activity of PP1c. [provided by RefSeq, Jul 2016],function:Inhibits protein phosphatase 1 activity toward phosphorylase, myosin light chain and myosin substrates.,sequence caution:Cloning artifact.,similarity:Contains 5 ANK repeats.,subunit:Binds PP1.,

## Research Area

## Image Data



Western blot analysis of PPP1R16A Antibody. The lane on the right is blocked with the PPP1R16A peptide.



Western blot analysis of the lysates from HeLa cells using PPP1R16A antibody.

## Note

For research use only.

**Product Name: MYPT3 Rabbit Polyclonal Antibody**  
**Catalog #: APRab14356**

---

