

Product Name: Myosin XVI Rabbit Polyclonal Antibody
Catalog #: APRab14348



Summary

Production Name	Myosin XVI Rabbit Polyclonal Antibody
Description	Rabbit Polyclonal Antibody
Host	Rabbit
Application	WB,ELISA,IHC-P
Reactivity	Human,Rat,Mouse

Performance

Conjugation	Unconjugated
Modification	Unmodified
Isotype	IgG
Clonality	Polyclonal
Form	Liquid
Storage	Store at 4°C short term. Aliquot and store at -20°C long term. Avoid freeze/thaw cycles.
Buffer	Liquid in PBS containing 50% glycerol, 0.5% BSA and 0.02% New type preservative N.
Purification	Affinity purification

Immunogen

Gene Name	MYO16
Alternative Names	MYO16; KIAA0865; MYO16B; NYAP3; Unconventional myosin-XVI; Neuronal tyrosine-phosphorylated phosphoinositide-3-kinase adapter 3; Unconventional myosin-16
Gene ID	23026.0
SwissProt ID	Q9Y6X6. Synthesized peptide derived from Myosin XVI . at AA range: 1050-1130

Application

Dilution Ratio	WB 1:500-2000, IHC-P 1:50-300, ELISA 2000-20000
Molecular Weight	200kDa

Background

function:Myosins are actin-based motor molecules with ATPase activity. Unconventional myosins serve in intracellular

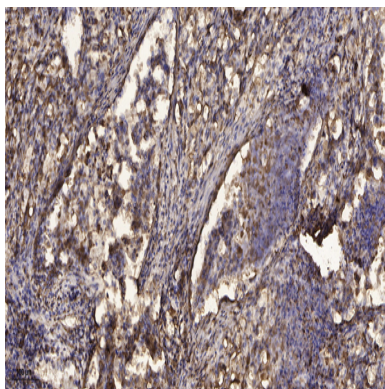
Product Name: Myosin XVI Rabbit Polyclonal Antibody
Catalog #: APRab14348



movements. Their highly divergent tails are presumed to bind to membranous compartments, which would be moved relative to actin filaments. May be involved in targeting of the catalytic subunit of protein phosphatase 1 during brain development.,similarity:Contains 1 IQ domain.,similarity:Contains 2 myosin head-like domains.,similarity:Contains 7 ANK repeats.,subcellular location:Found in puncta in soma and processes of astrocytes and dissociated cerebellar cells with the morphology of migrating granule cells.,subunit:Binds PPP1CA and/or PPP1CC. Binds F-actin in an ATP-sensitive manner.,function:Myosins are actin-based motor molecules with ATPase activity. Unconventional myosins serve in intracellular movements. Their highly divergent tails are presumed to bind to membranous compartments, which would be moved relative to actin filaments. May be involved in targeting of the catalytic subunit of protein phosphatase 1 during brain development.,similarity:Contains 1 IQ domain.,similarity:Contains 2 myosin head-like domains.,similarity:Contains 7 ANK repeats.,subcellular location:Found in puncta in soma and processes of astrocytes and dissociated cerebellar cells with the morphology of migrating granule cells.,subunit:Binds PPP1CA and/or PPP1CC. Binds F-actin in an ATP-sensitive manner.,

Research Area

Image Data



Immunohistochemical analysis of paraffin-embedded human Squamous cell carcinoma of lung. 1, Antibody was diluted at 1:200 (4° overnight) . 2, Tris-EDTA,pH9.0 was used for antigen retrieval. 3,Secondary antibody was diluted at 1:200 (room temperature, 45min) .

Note

For research use only.