

Summary

Production Name	MYH4 Rabbit Polyclonal Antibody
Description	Rabbit Polyclonal Antibody
Host	Rabbit
Application	IHC-P,IF-P,IF-F,ICC/IF,ELISA
Reactivity	Human,Rat,Mouse

Performance

Conjugation	Unconjugated
Modification	Unmodified
Isotype	IgG
Clonality	Polyclonal
Form	Liquid
Storage	Store at 4°C short term. Aliquot and store at -20°C long term. Avoid freeze/thaw cycles.
Buffer	Liquid in PBS containing 50% glycerol, 0.5% BSA and 0.02% New type preservative N.
Purification	Affinity purification

Immunogen

Gene Name	MYH4
Alternative Names	MYH4; Myosin-4; Myosin heavy chain 2b; MyHC-2b; Myosin heavy chain 4; Myosin heavy chain IIb; MyHC-IIb; Myosin heavy chain; skeletal muscle, fetal
Gene ID	4622.0
SwissProt ID	Q9Y623. The antiserum was produced against synthesized peptide derived from human MYH4. AA range:1677-1726

Application

Dilution Ratio	IHC-P 1:100-1:300, ELISA 1:5000, IF-P/IF-F/ICC/IF 1:50-200
Molecular Weight	

Background

Product Name: MYH4 Rabbit Polyclonal Antibody
Catalog #: APRab14296

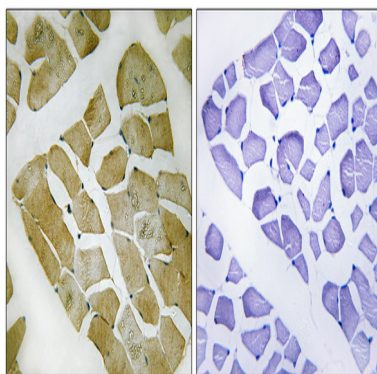


domain: The rodlike tail sequence is highly repetitive, showing cycles of a 28-residue repeat pattern composed of 4 heptapeptides, characteristic for alpha-helical coiled coils., function: Muscle contraction., miscellaneous: Each myosin heavy chain can be split into 1 light meromyosin (LMM) and 1 heavy meromyosin (HMM). It can later be split further into 2 globular subfragments (S1) and 1 rod-shaped subfragment (S2)., similarity: Contains 1 IQ domain., similarity: Contains 1 myosin head-like domain., subcellular location: Thick filaments of the myofibrils., subunit: Muscle myosin is a hexameric protein that consists of 2 heavy chain subunits (MHC), 2 alkali light chain subunits (MLC) and 2 regulatory light chain subunits (MLC-2)., domain: The rodlike tail sequence is highly repetitive, showing cycles of a 28-residue repeat pattern composed of 4 heptapeptides, characteristic for alpha-helical coiled coils., function: Muscle contraction., miscellaneous: Each myosin heavy chain can be split into 1 light meromyosin (LMM) and 1 heavy meromyosin (HMM). It can later be split further into 2 globular subfragments (S1) and 1 rod-shaped subfragment (S2)., similarity: Contains 1 IQ domain., similarity: Contains 1 myosin head-like domain., subcellular location: Thick filaments of the myofibrils., subunit: Muscle myosin is a hexameric protein that consists of 2 heavy chain subunits (MHC), 2 alkali light chain subunits (MLC) and 2 regulatory light chain subunits (MLC-2).,

Research Area

Tight junction; Viral myocarditis;

Image Data



Immunohistochemistry analysis of paraffin-embedded human skeletal muscle, using MYH4 Antibody. The picture on the right is blocked with the synthesized peptide.

Note

For research use only.