

Summary

Production Name	Musculin Rabbit Polyclonal Antibody
Description	Rabbit Polyclonal Antibody
Host	Rabbit
Application	WB,IHC-P,IF-P,IF-F,ICC/IF,ELISA
Reactivity	Human,Mouse

Performance

Conjugation	Unconjugated
Modification	Unmodified
Isotype	IgG
Clonality	Polyclonal
Form	Liquid
Storage	Store at 4°C short term. Aliquot and store at -20°C long term. Avoid freeze/thaw cycles.
Buffer	Liquid in PBS containing 50% glycerol, 0.5% BSA and 0.02% New type preservative N.
Purification	Affinity purification

Immunogen

Gene Name	MSC
Alternative Names	MSC; ABF1; BHLHA22; Musculin; Activated B-cell factor 1; ABF-1; Class A basic helix-loop-helix protein 22; bHLHa22
Gene ID	9242.0
SwissProt ID	O60682.The antiserum was produced against synthesized peptide derived from human Musculin. AA range:131-180

Application

Dilution Ratio	WB 1:500-1:2000, IHC-P 1:100-1:300, ELISA 1:10000, IF-P/IF-F/ICC/IF 1:50-200
Molecular Weight	22kDa

Product Name: Musculin Rabbit Polyclonal Antibody
Catalog #: APRab14247

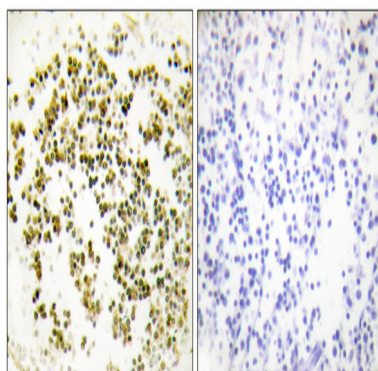


Background

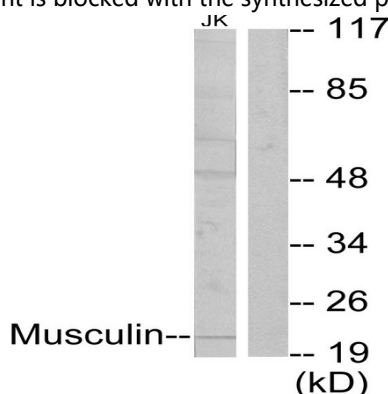
The protein encoded by this gene is a transcriptional repressor capable of binding an E-box element either as a homodimer or as a heterodimer with E2A in vitro. The encoded protein also forms heterodimers with E2A proteins in vivo. This protein is capable of inhibiting the transactivation capability of E47, an E2A protein, in mammalian cells. This gene is a downstream target of the B-cell receptor signal transduction pathway. [provided by RefSeq, Jul 2008],function:Transcription repressor capable of inhibiting the transactivation capability of TCF3/E47. May play a role in regulating antigen-dependent B-cell differentiation.,similarity:Contains 1 basic helix-loop-helix (bHLH) domain.,subunit:Efficient DNA binding requires dimerization with another bHLH protein. Binds DNA as a homodimer or a heterodimer. Forms a heterodimer with TCF3.,tissue specificity:Expressed in lymphoid tissues, B-cell lines and activated B-cells.,

Research Area

Image Data

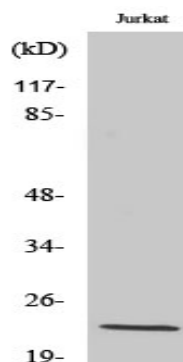


Immunohistochemistry analysis of paraffin-embedded human lymph node tissue, using Musculin Antibody. The picture on the right is blocked with the synthesized peptide.



Western blot analysis of lysates from Jurkat cells, using Musculin Antibody. The lane on the right is blocked with the synthesized peptide.

Product Name: Musculin Rabbit Polyclonal Antibody
Catalog #: APRab14247



Western Blot analysis of various cells using Musculin Polyclonal Antibody diluted at 1: 2000 cells nucleus extracted by Minute TM Cytoplasmic and Nuclear Fractionation kit (SC-003, Invent biotech, MN, USA) .

Note

For research use only.