

**Product Name: MSY2 Rabbit Polyclonal Antibody**  
**Catalog #: APRab14193**



## Summary

<b>Production Name</b>	MSY2 Rabbit Polyclonal Antibody
<b>Description</b>	Rabbit Polyclonal Antibody
<b>Host</b>	Rabbit
<b>Application</b>	WB,IHC-P,IF-P,IF-F,ICC/IF,ELISA
<b>Reactivity</b>	Human,Mouse

## Performance

<b>Conjugation</b>	Unconjugated
<b>Modification</b>	Unmodified
<b>Isotype</b>	IgG
<b>Clonality</b>	Polyclonal
<b>Form</b>	Liquid
<b>Storage</b>	Store at 4°C short term. Aliquot and store at -20°C long term. Avoid freeze/thaw cycles.
<b>Buffer</b>	Liquid in PBS containing 50% glycerol, 0.5% BSA and 0.02% New type preservative N.
<b>Purification</b>	Affinity purification

## Immunogen

<b>Gene Name</b>	YBX2
<b>Alternative Names</b>	YBX2; CSDA3; MSY2; Y-box-binding protein 2; Contrin; DNA-binding protein C; Dbpc; Germ cell-specific Y-box-binding protein; MSY2 homolog
<b>Gene ID</b>	51087.0
<b>SwissProt ID</b>	Q9Y2T7.The antiserum was produced against synthesized peptide derived from human YBOX2. AA range:281-330

## Application

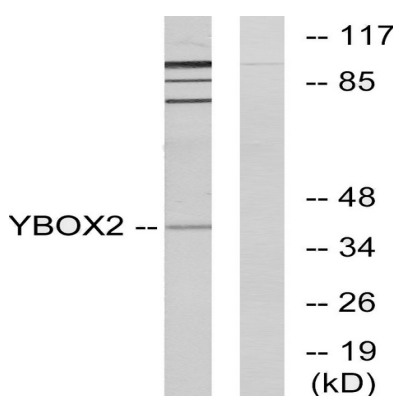
<b>Dilution Ratio</b>	WB 1:500-1:2000, IHC-P 1:100-1:300, IF-P/IF-F/ICC/IF 1:200-1:1000, ELISA 1:10000.Not yet tested in other applications.
<b>Molecular Weight</b>	38kDa

## Background

This gene encodes a nucleic acid binding protein which is highly expressed in germ cells. The encoded protein binds to a Y-box element in the promoters of certain genes but also binds to mRNA transcribed from these genes. Pseudogenes for this gene are located on chromosome 10 and 15. [provided by RefSeq, Feb 2012],function:Major constituent of messenger ribonucleoprotein particles (mRNPs). Involved in the regulation of the stability and/or translation of germ cell mRNAs. Binds to Y-box consensus promoter element. Binds to full length mRNA with high affinity in a sequence-independent manner. Binds to short RNA sequences containing the consensus site 5'-UCCAUCA-3' with low affinity and limited sequence specificity. Its binding with maternal mRNAs is necessary for its cytoplasmic retention. May mark specific mRNAs (those transcribed from Y-box promoters) in the nucleus for cytoplasmic storage, thereby linking transcription and mRNA storage/translational delay.,PTM:Phosphorylated during oocyte maturation and dephosphorylated following egg activation. Phosphorylated in vitro by a kinase activity associated with testicular mRNPs. Dephosphorylation leads to a decrease in its affinity to bind RNA in vitro.,similarity:Contains 1 CSD (cold-shock) domain.,subunit:Found in a mRNP complex with PABPC1 and CSDA.,tissue specificity:Expressed in oocytes and testicular germ cells in the stage of spermatogonia to spermatocyte. Also observed placental trophoblasts, as well as in vascular smooth muscle cells in the pulmonary artery, myocardium, and skeletal muscle. Undetectable in epithelial cells in respiratory, gastrointestinal, and urogenital tracts. Up-regulated in various carcinomas and germ cell tumors (at protein level),

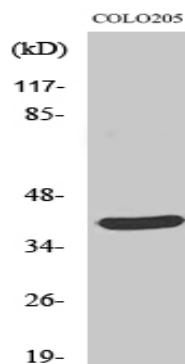
## Research Area

## Image Data



**Product Name: MSY2 Rabbit Polyclonal Antibody**  
**Catalog #: APRab14193**

---



Western Blot analysis of various cells using MSY2 Polyclonal Antibody

### **Note**

For research use only.