

Product Name: MSS4 Rabbit Polyclonal Antibody
Catalog #: APRab14185



Summary

Production Name	MSS4 Rabbit Polyclonal Antibody
Description	Rabbit Polyclonal Antibody
Host	Rabbit
Application	WB,ELISA
Reactivity	Human,Mouse,Rat

Performance

Conjugation	Unconjugated
Modification	Unmodified
Isotype	IgG
Clonality	Polyclonal
Form	Liquid
Storage	Store at 4°C short term. Aliquot and store at -20°C long term. Avoid freeze/thaw cycles.
Buffer	Liquid in PBS containing 50% glycerol, and 0.02% New type preservative N.
Purification	Affinity purification

Immunogen

Gene Name	RABIF MSS4 RASGRF3
Alternative Names	
Gene ID	5877.0
SwissProt ID	P47224. Synthesized peptide derived from part region of human protein

Application

Dilution Ratio	WB 1:500-2000, ELISA 1:5000-20000
Molecular Weight	13kDa

Background

This gene encodes a member of the SCE4/YPT1/RAB family of small GTP-binding proteins that are involved in the regulation of intracellular vesicular transport. This protein stimulates GTP-GDP exchange in SEC4, and to a lesser extent in

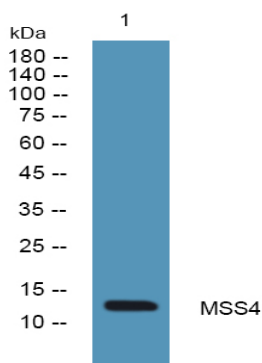
Product Name: MSS4 Rabbit Polyclonal Antibody
Catalog #: AP Rab14185



YPT1 and RAB3A, and may play a general role in vesicular transport. [provided by RefSeq, Oct 2011],function:Guanine-nucleotide-releasing protein that acts on members of the SCE4/YPT1/RAB subfamily. Stimulates GDP release from both YPT1 and RAB3A, but is less active on these proteins than on the SEC4 protein. Might play a general role in vesicular transport.,similarity:Belongs to the DSS4/MSS4 family.,tissue specificity:Ubiquitous.,

Research Area

Image Data



Western blot analysis of lysates from PC12 cells, primary antibody was diluted at 1:1000, 4° over night

Note

For research use only.