

**Product Name: MRP-S34 Rabbit Polyclonal Antibody**  
**Catalog #: APRab14155**



## Summary

<b>Production Name</b>	MRP-S34 Rabbit Polyclonal Antibody
<b>Description</b>	Rabbit Polyclonal Antibody
<b>Host</b>	Rabbit
<b>Application</b>	WB,ELISA,IHC-P
<b>Reactivity</b>	Human,Mouse

## Performance

<b>Conjugation</b>	Unconjugated
<b>Modification</b>	Unmodified
<b>Isotype</b>	IgG
<b>Clonality</b>	Polyclonal
<b>Form</b>	Liquid
<b>Storage</b>	Store at 4°C short term. Aliquot and store at -20°C long term. Avoid freeze/thaw cycles.
<b>Buffer</b>	Liquid in PBS containing 50% glycerol, 0.5% BSA and 0.02% New type preservative N.
<b>Purification</b>	Affinity purification

## Immunogen

<b>Gene Name</b>	MRPS34
<b>Alternative Names</b>	MRPS34; 28S ribosomal protein S34; mitochondrial; MRP-S34; S34mt
<b>Gene ID</b>	65993.0
<b>SwissProt ID</b>	P82930.The antiserum was produced against synthesized peptide derived from human MRPS34. AA range:169-218

## Application

<b>Dilution Ratio</b>	WB 1:500-2000, IHC-P 1:50-300, ELISA 2000-20000
<b>Molecular Weight</b>	26kDa

## Background



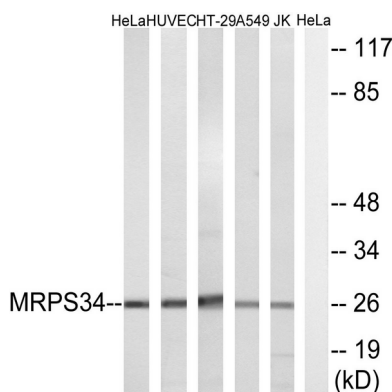
**Product Name: MRP-S34 Rabbit Polyclonal Antibody**  
**Catalog #: AP Rab14155**



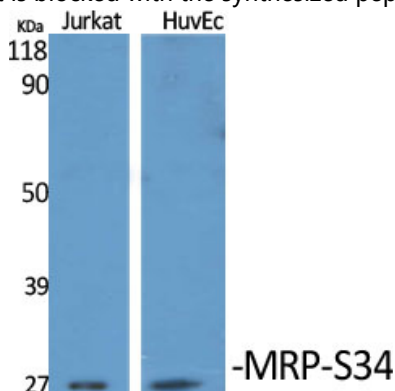
Mammalian mitochondrial ribosomal proteins are encoded by nuclear genes and help in protein synthesis within the mitochondrion. Mitochondrial ribosomes (mitoribosomes) consist of a small 28S subunit and a large 39S subunit. They have an estimated 75% protein to rRNA composition compared to prokaryotic ribosomes, where this ratio is reversed. Another difference between mammalian mitoribosomes and prokaryotic ribosomes is that the latter contain a 5S rRNA. Among different species, the proteins comprising the mitoribosome differ greatly in sequence, and sometimes in biochemical properties, which prevents easy recognition by sequence homology. This gene encodes a 28S subunit protein. Alternative splicing results in multiple transcript variants. [provided by RefSeq, Jul 2014], subunit: Component of the mitochondrial ribosome small subunit (28S) which comprises a 12S rRNA and about 30 distinct proteins.,

## Research Area

## Image Data



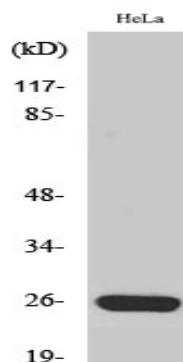
Western blot analysis of lysates from HeLa, HUVEC, HT-29, A549, and Jurkat cells, using MRPS34 Antibody. The lane on the right is blocked with the synthesized peptide.



Western Blot analysis of various cells using MRP-S34 Polyclonal Antibody diluted at 1: 1000



**Product Name: MRP-S34 Rabbit Polyclonal Antibody**  
**Catalog #: APRab14155**



Western Blot analysis of Jurkat cells using MRP-S34 Polyclonal Antibody diluted at 1: 1000

### **Note**

For research use only.