

Product Name: MRP-S32 Rabbit Polyclonal Antibody
Catalog #: APRab14153



Summary

| | |
|------------------------|------------------------------------|
| Production Name | MRP-S32 Rabbit Polyclonal Antibody |
| Description | Rabbit Polyclonal Antibody |
| Host | Rabbit |
| Application | IHC-P,IF-P,IF-F,ICC/IF,ELISA |
| Reactivity | Human,Rat,Mouse |

Performance

| | |
|---------------------|--|
| Conjugation | Unconjugated |
| Modification | Unmodified |
| Isotype | IgG |
| Clonality | Polyclonal |
| Form | Liquid |
| Storage | Store at 4°C short term. Aliquot and store at -20°C long term. Avoid freeze/thaw cycles. |
| Buffer | Liquid in PBS containing 50% glycerol, 0.5% BSA and 0.02% New type preservative N. |
| Purification | Affinity purification |

Immunogen

| | |
|--------------------------|---|
| Gene Name | MRPL42 MRPL42; MRPL31; MRPS32; RPML31; HSPC204; PTD007; 39S ribosomal protein L42; |
| Alternative Names | mitochondrial; L42mt; MRP-L42; 28S ribosomal protein S32, mitochondrial; MRP-S32; S32mt; 39S ribosomal protein L31, mitochondrial; L31mt; MRP-L31 |
| Gene ID | 28977.0 |
| SwissProt ID | Q9Y6G3.The antiserum was produced against synthesized peptide derived from human MRPS42. AA range:75-124 |

Application

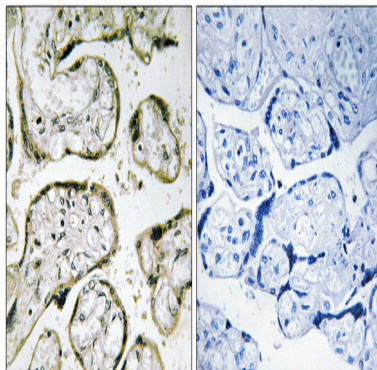
| | |
|-------------------------|---|
| Dilution Ratio | IHC-P 1:100-1:300, ELISA 1:40000, IF-P/IF-F/ICC/IF 1:50-200 |
| Molecular Weight | |

Background

Mammalian mitochondrial ribosomal proteins are encoded by nuclear genes and help in protein synthesis within the mitochondrion. Mitochondrial ribosomes (mitoribosomes) consist of a small 28S subunit and a large 39S subunit. They have an estimated 75% protein to rRNA composition compared to prokaryotic ribosomes, where this ratio is reversed. Another difference between mammalian mitoribosomes and prokaryotic ribosomes is that the latter contain a 5S rRNA. Among different species, the proteins comprising the mitoribosome differ greatly in sequence, and sometimes in biochemical properties, which prevents easy recognition by sequence homology. This gene encodes a protein identified as belonging to both the 28S and the 39S subunits. Alternative splicing results in multiple transcript variants. Pseudogenes corresponding to this gene are found on chromosomes 4q, 6p, 6q, 7p, and 15q. [providcaution:Has been found in mitochondrial the ribosome large and small subunit. Was erroneously (PubMed:11551941) assigned to be MRP-S31.,subunit:Component of the mitochondrial ribosome large subunit (39S) which comprises a 16S rRNA and about 50 distinct proteins. Component of the mitochondrial ribosome small subunit (28S) which comprises a 12S rRNA and about 30 distinct proteins.,

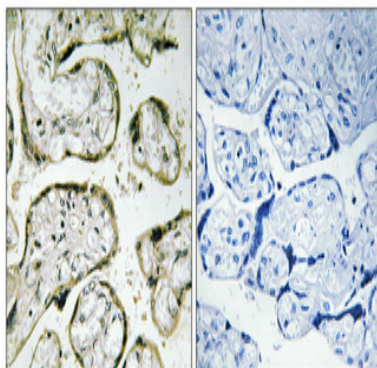
Research Area

Image Data



Immunohistochemistry analysis of paraffin-embedded human placenta, using MRPS32 Antibody. The picture on the right is blocked with the synthesized peptide.

Product Name: MRP-S32 Rabbit Polyclonal Antibody
Catalog #: APRab14153



Immunohistochemical analysis of paraffin-embedded Human placenta. Antibody was diluted at 1:100 (4°, overnight) . High-pressure and temperature Tris-EDTA, pH 8.0 was used for antigen retrieval. Negative control (right) obtained from antibody was pre-absorbed by immunogen peptide.

Note

For research use only.