

## Summary

<b>Production Name</b>	MRP-S25 Rabbit Polyclonal Antibody
<b>Description</b>	Rabbit Polyclonal Antibody
<b>Host</b>	Rabbit
<b>Application</b>	WB,ELISA,IHC-P
<b>Reactivity</b>	Human,Mouse,Rat

## Performance

<b>Conjugation</b>	Unconjugated
<b>Modification</b>	Unmodified
<b>Isotype</b>	IgG
<b>Clonality</b>	Polyclonal
<b>Form</b>	Liquid
<b>Storage</b>	Store at 4°C short term. Aliquot and store at -20°C long term. Avoid freeze/thaw cycles.
<b>Buffer</b>	Liquid in PBS containing 50% glycerol, 0.5% BSA and 0.02% New type preservative N.
<b>Purification</b>	Affinity purification

## Immunogen

<b>Gene Name</b>	MRPS25
<b>Alternative Names</b>	MRPS25; RPMS25; 28S ribosomal protein S25; mitochondrial; MRP-S25; S25mt
<b>Gene ID</b>	64432.0
<b>SwissProt ID</b>	P82663.The antiserum was produced against synthesized peptide derived from human MRPS25. AA range:124-173

## Application

<b>Dilution Ratio</b>	WB 1:500-2000, IHC-P 1:50-300, ELISA 2000-20000
<b>Molecular Weight</b>	20kDa

## Background

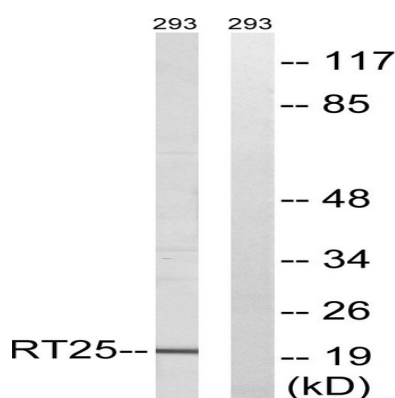
**Product Name: MRP-S25 Rabbit Polyclonal Antibody**  
**Catalog #: AP Rab14149**



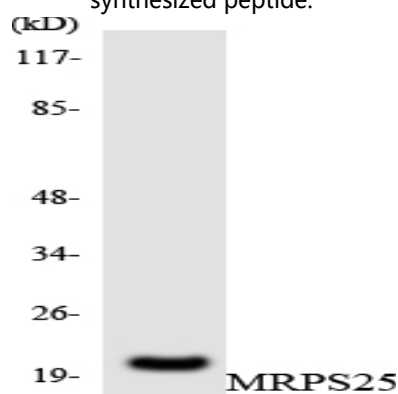
Mammalian mitochondrial ribosomal proteins are encoded by nuclear genes and help in protein synthesis within the mitochondrion. Mitochondrial ribosomes (mitoribosomes) consist of a small 28S subunit and a large 39S subunit. They have an estimated 75% protein to rRNA composition compared to prokaryotic ribosomes, where this ratio is reversed. Another difference between mammalian mitoribosomes and prokaryotic ribosomes is that the latter contain a 5S rRNA. Among different species, the proteins comprising the mitoribosome differ greatly in sequence, and sometimes in biochemical properties, which prevents easy recognition by sequence homology. This gene encodes a 28S subunit protein. A pseudogene corresponding to this gene is found on chromosome 4. Alternative splicing results in multiple transcript variants. [provided by RefSeq, Feb 2016], similarity: Belongs to the ribosomal protein S25/L51 family., subunit: Component of the mitochondrial ribosome small subunit (28S) which comprises a 12S rRNA and about 30 distinct proteins.,

## Research Area

## Image Data

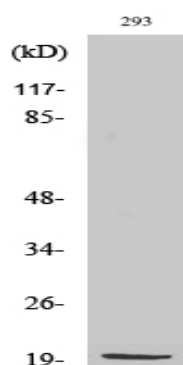


Western blot analysis of lysates from 293 cells, using MRPS25 Antibody. The lane on the right is blocked with the synthesized peptide.



Western blot analysis of the lysates from HepG2 cells using MRPS25 antibody.

**Product Name: MRP-S25 Rabbit Polyclonal Antibody**  
**Catalog #: APRab14149**



Western Blot analysis of various cells using MRP-S25 Polyclonal Antibody diluted at 1: 2000

### **Note**

For research use only.