

## Summary

<b>Production Name</b>	MRP-L22 Rabbit Polyclonal Antibody
<b>Description</b>	Rabbit Polyclonal Antibody
<b>Host</b>	Rabbit
<b>Application</b>	WB,IHC-P,IF-P,IF-F,ICC/IF,ELISA
<b>Reactivity</b>	Human,Mouse,Rat

## Performance

<b>Conjugation</b>	Unconjugated
<b>Modification</b>	Unmodified
<b>Isotype</b>	IgG
<b>Clonality</b>	Polyclonal
<b>Form</b>	Liquid
<b>Storage</b>	Store at 4°C short term. Aliquot and store at -20°C long term. Avoid freeze/thaw cycles.
<b>Buffer</b>	Liquid in PBS containing 50% glycerol, 0.5% BSA and 0.02% New type preservative N.
<b>Purification</b>	Affinity purification

## Immunogen

<b>Gene Name</b>	MRPL22
<b>Alternative Names</b>	MRPL22; MRPL25; RPML25; HSPC158; 39S ribosomal protein L22; mitochondrial; L22mt; MRP-L22; 39S ribosomal protein L25, mitochondrial; L25mt; MRP-L25
<b>Gene ID</b>	29093.0
<b>SwissProt ID</b>	Q9NWU5.The antiserum was produced against synthesized peptide derived from human MRPL22. AA range:91-140

## Application

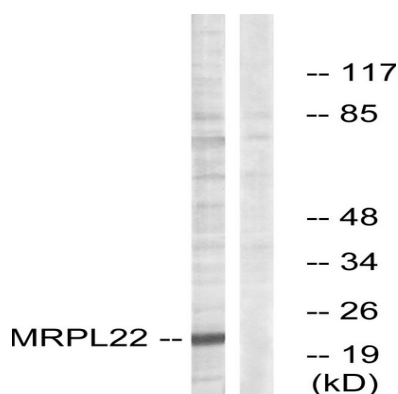
<b>Dilution Ratio</b>	WB 1:500-1:2000, IHC-P 1:100-1:300, ELISA 1:10000, IF-P/IF-F/ICC/IF 1:50-200
<b>Molecular Weight</b>	24kDa

## Background

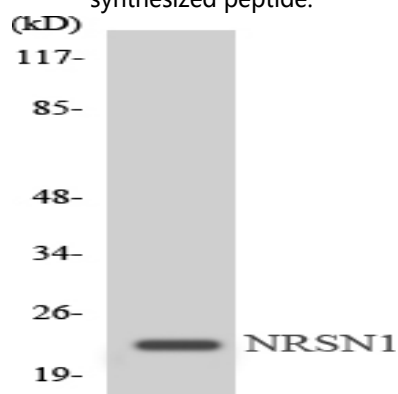
Mammalian mitochondrial ribosomal proteins are encoded by nuclear genes and help in protein synthesis within the mitochondrion. Mitochondrial ribosomes (mitoribosomes) consist of a small 28S subunit and a large 39S subunit. They have an estimated 75% protein to rRNA composition compared to prokaryotic ribosomes, where this ratio is reversed. Another difference between mammalian mitoribosomes and prokaryotic ribosomes is that the latter contain a 5S rRNA. Among different species, the proteins comprising the mitoribosome differ greatly in sequence, and sometimes in biochemical properties, which prevents easy recognition by sequence homology. This gene encodes a 39S subunit protein that belongs to the L22 ribosomal protein family. A pseudogene corresponding to this gene is found on chromosome 4q. Two transcript variants encoding different isoforms have been found for this gene. [providesimilarity:Belongs to the ribosomal protein L22P family.,

## Research Area

## Image Data



Western blot analysis of lysates from HepG2 cells, using MRPL22 Antibody. The lane on the right is blocked with the synthesized peptide.



Western blot analysis of the lysates from Jurkat cells using MRPL22 antibody.

**Product Name: MRP-L22 Rabbit Polyclonal Antibody**  
**Catalog #: APRab14119**

---



**Note**

For research use only.