

Product Name: MRGG Rabbit Polyclonal Antibody
Catalog #: APRab14088



Summary

Production Name	MRGG Rabbit Polyclonal Antibody
Description	Rabbit Polyclonal Antibody
Host	Rabbit
Application	WB,ELISA,IHC-P
Reactivity	Human,Rat,Mouse

Performance

Conjugation	Unconjugated
Modification	Unmodified
Isotype	IgG
Clonality	Polyclonal
Form	Liquid
Storage	Store at 4°C short term. Aliquot and store at -20°C long term. Avoid freeze/thaw cycles.
Buffer	Liquid in PBS containing 50% glycerol, 0.5% BSA and 0.02% New type preservative N.
Purification	Affinity purification

Immunogen

Gene Name	MRGPRG
Alternative Names	MRGPRG; GPR169; MRGG; Mas-related G-protein coupled receptor member G; G-protein coupled receptor 169
Gene ID	386746.0
SwissProt ID	Q86SM5.The antiserum was produced against synthesized peptide derived from human MRGRG. AA range:231-280

Application

Dilution Ratio	WB 1:500-2000, IHC-P 1:50-300, ELISA 2000-20000
Molecular Weight	34kDa

Product Name: MRGG Rabbit Polyclonal Antibody
Catalog #: APRab14088

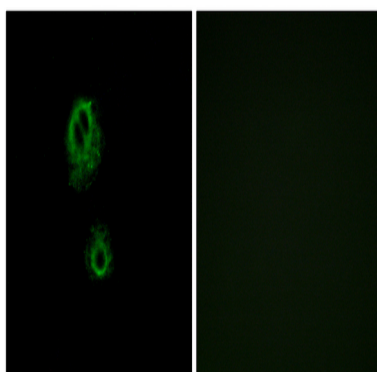


Background

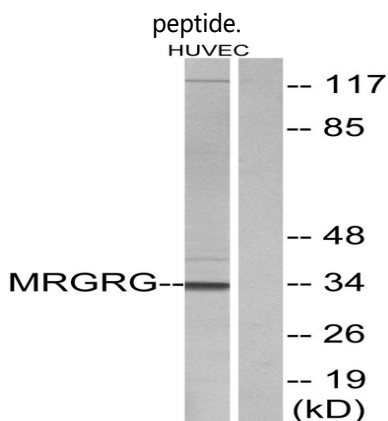
function:Orphan receptor. May regulate nociceptor function and/or development, including the sensation or modulation of pain.,similarity:Belongs to the G-protein coupled receptor 1 family. Mas subfamily.,function:Orphan receptor. May regulate nociceptor function and/or development, including the sensation or modulation of pain.,similarity:Belongs to the G-protein coupled receptor 1 family. Mas subfamily.,

Research Area

Image Data

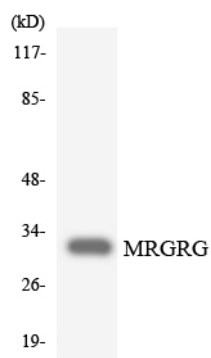


Immunofluorescence analysis of A549 cells, using MRGRG Antibody. The picture on the right is blocked with the synthesized

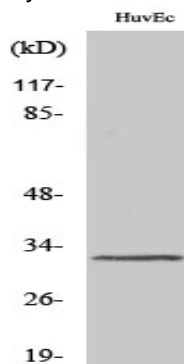


Western blot analysis of lysates from HUVEC cells, using MRGRG Antibody. The lane on the right is blocked with the synthesized peptide.

Product Name: MRGG Rabbit Polyclonal Antibody
Catalog #: APRab14088



Western blot analysis of the lysates from HepG2 cells using MRGRG antibody.



Western Blot analysis of various cells using MRGG Polyclonal Antibody

Note

For research use only.