

**Product Name: mPR $\gamma$  Rabbit Polyclonal Antibody**  
**Catalog #: APRab14070**



## Summary

<b>Production Name</b>	mPR $\gamma$ Rabbit Polyclonal Antibody
<b>Description</b>	Rabbit Polyclonal Antibody
<b>Host</b>	Rabbit
<b>Application</b>	WB,ELISA,IHC-P
<b>Reactivity</b>	Human,Mouse,Rat

## Performance

<b>Conjugation</b>	Unconjugated
<b>Modification</b>	Unmodified
<b>Isotype</b>	IgG
<b>Clonality</b>	Polyclonal
<b>Form</b>	Liquid
<b>Storage</b>	Store at 4°C short term. Aliquot and store at -20°C long term. Avoid freeze/thaw cycles.
<b>Buffer</b>	Liquid in PBS containing 50% glycerol, 0.5% BSA and 0.02% New type preservative N.
<b>Purification</b>	Affinity purification

## Immunogen

<b>Gene Name</b>	PAQR5
<b>Alternative Names</b>	PAQR5; MPRG; Membrane progesterin receptor gamma; mPR gamma; Progesterin and adipoQ receptor family member 5; Progesterin and adipoQ receptor family member V
<b>Gene ID</b>	54852.0
<b>SwissProt ID</b>	Q9NXX6. The antiserum was produced against synthesized peptide derived from human MPRG. AA range:281-330

## Application

<b>Dilution Ratio</b>	WB 1:500-2000, IHC-P 1:50-300, ELISA 2000-20000
<b>Molecular Weight</b>	38kDa

## Background

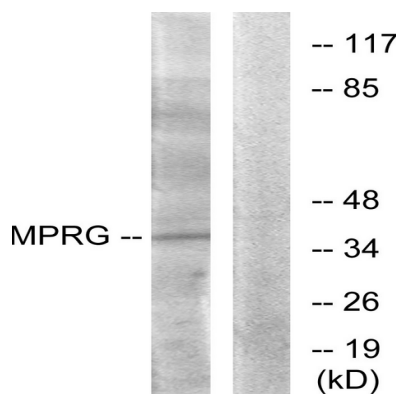
**Product Name: mPRy Rabbit Polyclonal Antibody**  
**Catalog #: APRab14070**



function: Steroid membrane receptor. Binds progesterone. May be involved in oocyte maturation., similarity: Belongs to the ADIPOR family., tissue specificity: Expressed in the kidney, colon, adrenal and lung., function: Steroid membrane receptor. Binds progesterone. May be involved in oocyte maturation., similarity: Belongs to the ADIPOR family., tissue specificity: Expressed in the kidney, colon, adrenal and lung.,

## Research Area

## Image Data



Western blot analysis of lysates from HUVEC cells, using MPRG Antibody. The lane on the right is blocked with the synthesized peptide.

## Note

For research use only.