

Product Name: Mob1A Rabbit Polyclonal Antibody
Catalog #: APRab14013



Summary

Production Name	Mob1A Rabbit Polyclonal Antibody
Description	Rabbit Polyclonal Antibody
Host	Rabbit
Application	WB,IHC-P,IF-P,IF-F,ICC/IF,ELISA
Reactivity	Human,Mouse,Monkey

Performance

Conjugation	Unconjugated
Modification	Unmodified
Isotype	IgG
Clonality	Polyclonal
Form	Liquid
Storage	Store at 4°C short term. Aliquot and store at -20°C long term. Avoid freeze/thaw cycles.
Buffer	Liquid in PBS containing 50% glycerol, 0.5% BSA and 0.02% New type preservative N.
Purification	Affinity purification

Immunogen

Gene Name	MOB1B
Alternative Names	MOB1B; MOB4A; MOBKL1A; MOB kinase activator 1B; Mob1 homolog 1A; Mob1A; Mob1B; Mps one binder kinase activator-like 1A
Gene ID	92597.0
SwissProt ID	Q7L9L4.The antiserum was produced against synthesized peptide derived from human MOL1A. AA range:101-150

Application

Dilution Ratio	WB 1:500-1:2000, IHC-P 1:100-1:300, ELISA 1:40000, IF-P/IF-F/ICC/IF 1:50-200
Molecular Weight	25kDa

Product Name: Mob1A Rabbit Polyclonal Antibody
Catalog #: APRab14013

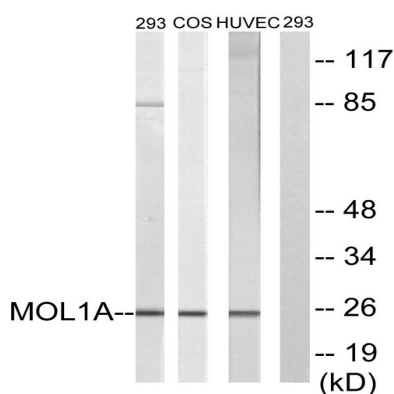


Background

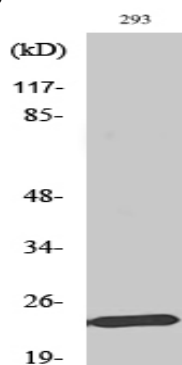
The protein encoded by this gene is similar to the yeast Mob1 protein. Yeast Mob1 binds Mps1p, a protein kinase essential for spindle pole body duplication and mitotic checkpoint regulation. Three transcript variants encoding different isoforms have been found for this gene. [provided by RefSeq, Sep 2011],function:Stimulates the kinase activity of STK38L,.,similarity:Belongs to the MOB1/phocein family,.,subunit:Binds STK38L,.

Research Area

Image Data



Western blot analysis of lysates from 293, COS7, and HUVEC cells, treated with IFN 2500U/ml 30', using MOL1A Antibody.
The lane on the right is blocked with the synthesized peptide.



Western Blot analysis of various cells using Mob1A Polyclonal Antibody

Note

For research use only.