

Summary

Production Name	MMP-7 Rabbit Polyclonal Antibody
Description	Rabbit Polyclonal Antibody
Host	Rabbit
Application	WB,IHC-P,IF-P,IF-F,ICC/IF,ELISA
Reactivity	Human,Mouse,Rat,Monkey

Performance

Conjugation	Unconjugated
Modification	Unmodified
Isotype	IgG
Clonality	Polyclonal
Form	Liquid
Storage	Store at 4°C short term. Aliquot and store at -20°C long term. Avoid freeze/thaw cycles.
Buffer	Liquid in PBS containing 50% glycerol, 0.5% BSA and 0.02% New type preservative N.
Purification	Affinity purification

Immunogen

Gene Name	MMP7
Alternative Names	MMP7; MPSL1; PUMP1; Matrilysin; Matrin; Matrix metalloproteinase-7; MMP-7; Pump-1 protease; Uterine metalloproteinase
Gene ID	4316.0
SwissProt ID	P09237.The antiserum was produced against synthesized peptide derived from human MMP-7. AA range:218-267

Application

Dilution Ratio	WB 1:500-1:2000, IHC-P 1:100-1:300, ELISA 1:40000, IF-P/IF-F/ICC/IF 1:50-200
Molecular Weight	29kDa

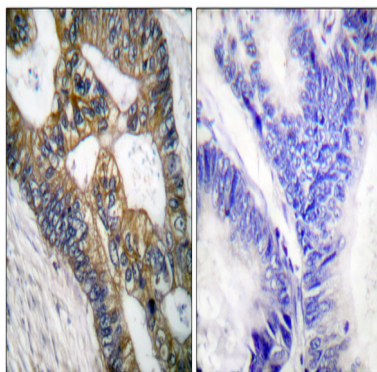
Background

matrix metalloproteinase 7(MMP7) Homo sapiens This gene encodes a member of the peptidase M10 family of matrix metalloproteinases (MMPs). Proteins in this family are involved in the breakdown of extracellular matrix in normal physiological processes, such as embryonic development, reproduction, and tissue remodeling, as well as in disease processes, such as arthritis and metastasis. The encoded preproprotein is proteolytically processed to generate the mature protease. This secreted protease breaks down proteoglycans, fibronectin, elastin and casein and differs from most MMP family members in that it lacks a conserved C-terminal hemopexin domain. The enzyme is involved in wound healing, and studies in mice suggest that it regulates the activity of defensins in intestinal mucosa. The gene is part of a cluster of MMP genes on chromosome 11. This gene exhibits elevated expression levels in multiple human cancers. [provided by RefSeq, Jan 2016], catalytic activity: Cleavage of 14-Ala-|-Leu-15 and 16-Tyr-|-Leu-17 in B chain of insulin. No action on collagen types I, II, IV, V. Cleaves gelatin chain alpha-2(I) > alpha-1(I)., cofactor: Binds 2 calcium ions per subunit., cofactor: Binds 2 zinc ions per subunit., domain: The conserved cysteine present in the cysteine-switch motif binds the catalytic zinc ion, thus inhibiting the enzyme. The dissociation of the cysteine from the zinc ion upon the activation-peptide release activates the enzyme., function: Degrades casein, gelatins of types I, III, IV, and V, and fibronectin. Activates procollagenase., similarity: Belongs to the peptidase M10A family.,

Research Area

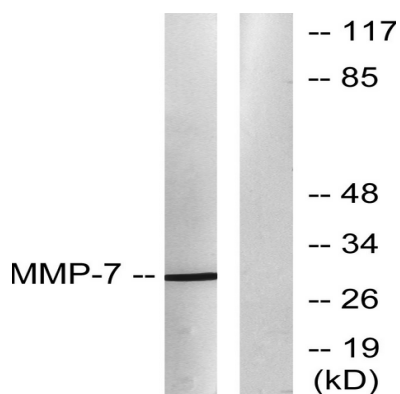
WNT; WNT-T CELL

Image Data

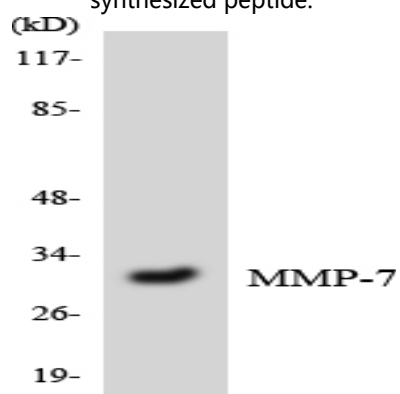


Immunohistochemistry analysis of paraffin-embedded human colon carcinoma tissue, using MMP-7 Antibody. The picture on the right is blocked with the synthesized peptide.

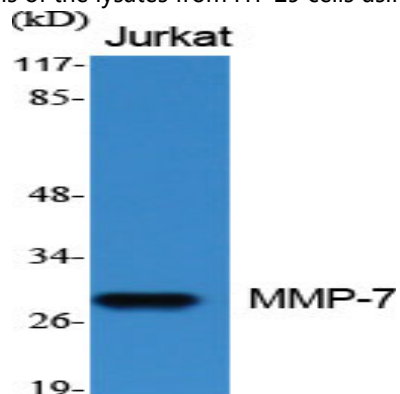
Product Name: MMP-7 Rabbit Polyclonal Antibody
Catalog #: APRab13996



Western blot analysis of lysates from COS7 cells, using MMP-7 Antibody. The lane on the right is blocked with the synthesized peptide.

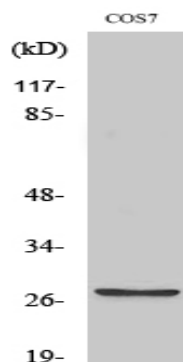


Western blot analysis of the lysates from HT-29 cells using MMP-7 antibody.

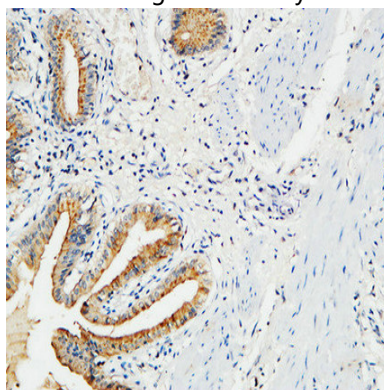


Western Blot analysis of various cells using MMP-7 Polyclonal Antibody diluted at 1: 500

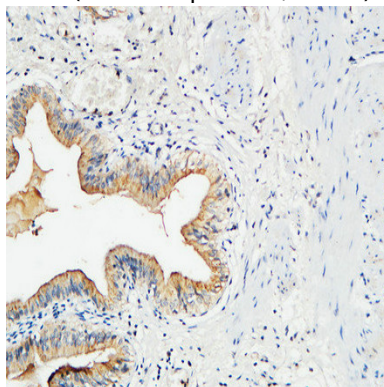
Product Name: MMP-7 Rabbit Polyclonal Antibody
Catalog #: APRab13996



Western Blot analysis of COS7 cells using MMP-7 Polyclonal Antibody diluted at 1: 500

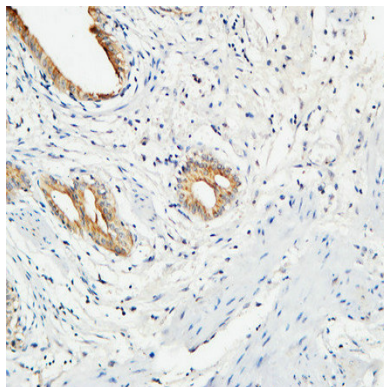


Immunohistochemical analysis of paraffin-embedded Human gallbladder. 1, Antibody was diluted at 1:100 (4°,overnight) .
2, High-pressure and temperature EDTA, pH8.0 was used for antigen retrieval. 3,Secondary antibody was diluted at 1:200 (room temperature, 30min) .

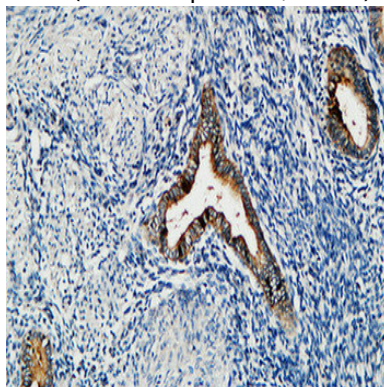


Immunohistochemical analysis of paraffin-embedded Human gallbladder. 1, Antibody was diluted at 1:100 (4°,overnight) .
2, High-pressure and temperature EDTA, pH8.0 was used for antigen retrieval. 3,Secondary antibody was diluted at 1:200 (room temperature, 30min) .

Product Name: MMP-7 Rabbit Polyclonal Antibody
Catalog #: APRab13996



Immunohistochemical analysis of paraffin-embedded Human gallbladder. 1, Antibody was diluted at 1:100 (4°,overnight) .
2, High-pressure and temperature EDTA, pH8.0 was used for antigen retrieval. 3,Secondary antibody was diluted at
1:200 (room temperature, 30min) .



Immunohistochemical analysis of paraffin-embedded Human uterus. 1, Antibody was diluted at 1:100 (4°,overnight) . 2,
High-pressure and temperature EDTA, pH8.0 was used for antigen retrieval. 3,Secondary antibody was diluted at
1:200 (room temperature, 30min) .

Note

For research use only.