

Summary

Production Name	MMP-2 Rabbit Polyclonal Antibody
Description	Rabbit Polyclonal Antibody
Host	Rabbit
Application	WB,IHC-P,IF-P,IF-F,ICC/IF,ELISA
Reactivity	Human,Mouse,Rat,Monkey

Performance

Conjugation	Unconjugated
Modification	Unmodified
Isotype	IgG
Clonality	Polyclonal
Form	Liquid
Storage	Store at 4°C short term. Aliquot and store at -20°C long term. Avoid freeze/thaw cycles.
Buffer	Liquid in PBS containing 50% glycerol, 0.5% BSA and 0.02% New type preservative N.
Purification	Affinity purification

Immunogen

Gene Name	MMP2
Alternative Names	MMP2; CLG4A; 72 kDa type IV collagenase; 72 kDa gelatinase; Gelatinase A; Matrix metalloproteinase-2; MMP-2; TBE-1
Gene ID	4313.0
SwissProt ID	P08253.The antiserum was produced against synthesized peptide derived from human MMP-2. AA range:611-660

Application

Dilution Ratio	WB 1:500-1:2000, IHC-P 1:100-1:300, IF-P/IF-F/ICC/IF 1:200-1:1000, ELISA 1:20000.Not yet tested in other applications.
Molecular Weight	74kDa

Background

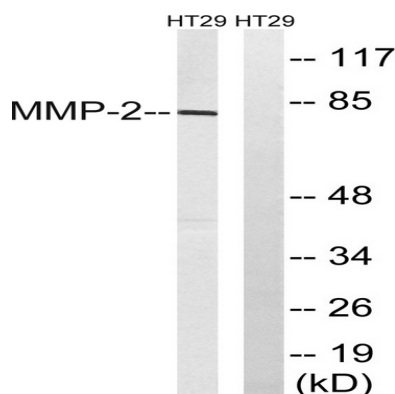
matrix metalloproteinase 2(MMP2) Homo sapiens This gene is a member of the matrix metalloproteinase (MMP) gene family, that are zinc-dependent enzymes capable of cleaving components of the extracellular matrix and molecules involved in signal transduction. The protein encoded by this gene is a gelatinase A, type IV collagenase, that contains three fibronectin type II repeats in its catalytic site that allow binding of denatured type IV and V collagen and elastin. Unlike most MMP family members, activation of this protein can occur on the cell membrane. This enzyme can be activated extracellularly by proteases, or, intracellularly by its S-glutathiolation with no requirement for proteolytical removal of the pro-domain. This protein is thought to be involved in multiple pathways including roles in the nervous system, endometrial menstrual breakdown, regulation of vascularization, and metastasis. Mutations in this gene have been associated with Wincatalytic activity: Cleavage of gelatin type I and collagen types IV, V, VII, X. Cleaves the collagen-like sequence Pro-Gln-Gly-|-Ile-Ala-Gly-Gln., cofactor: Binds 2 zinc ions per subunit., cofactor: Binds 4 calcium ions per subunit., disease: Defects in MMP2 are the cause of Torg-Winchester syndrome [MIM:259600]; also called multicentric osteolysis nodulosis and arthropathy (MONA). Torg-Winchester syndrome is an autosomal recessive osteolysis syndrome. It is severe with generalized osteolysis and osteopenia. Subcutaneous nodules are usually absent. Torg-Winchester syndrome has been associated with a number of additional features including coarse face, corneal opacities, patches of thickened, hyperpigmented skin, hypertrichosis and gum hypertrophy. However, these features are not always present and have occasionally been observed in other osteolysis syndromes., domain: The conserved cysteine present in the cysteine-switch motif binds the catalytic zinc ion, thus inhibiting the enzyme. The dissociation of the cysteine from the zinc ion upon the activation-peptide release activates the enzyme., enzyme regulation: Inhibited by histatin-3 1/24 (histatin-5),., function: In addition to gelatin and collagens, it cleaves KiSS1 at a Gly-|-Leu bond., PTM: The propeptide is processed by MMP14 (MT-MMP1) and MMP16 (MT-MMP3),., similarity: Belongs to the peptidase M10A family., similarity: Contains 3 fibronectin type-II domains., similarity: Contains 4 hemopexin-like domains., subunit: Ligand for integrin alpha-V/beta-3., tissue specificity: Produced by normal skin fibroblasts.,

Research Area

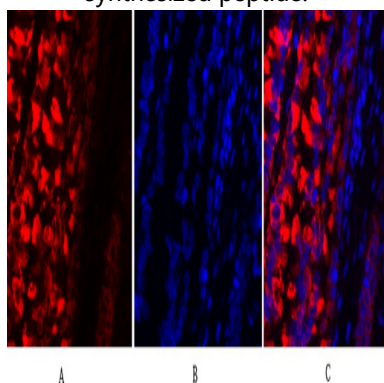
Leukocyte transendothelial migration; GnRH; Pathways in cancer; Bladder cancer;

Image Data

Product Name: MMP-2 Rabbit Polyclonal Antibody
Catalog #: APRab13988

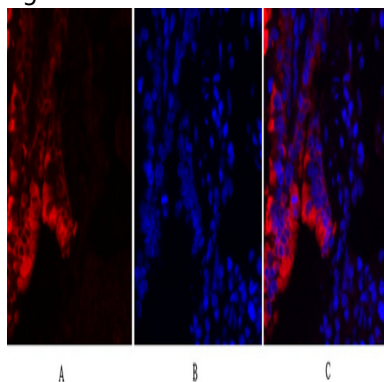


Western blot analysis of lysates from HT-29 cells, using MMP-2 Antibody. The lane on the right is blocked with the synthesized peptide.



Immunofluorescence analysis of rat-lung tissue. 1, MMP-2 Polyclonal Antibody (red) was diluted at 1:200 (4°C, overnight). 2, Cy3 labeled Secondary antibody was diluted at 1:300 (room temperature, 50min). 3, Picture B: DAPI (blue) 10min.

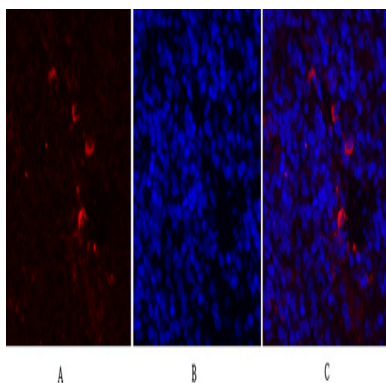
Picture A: Target. Picture B: DAPI. Picture C: merge of A+B



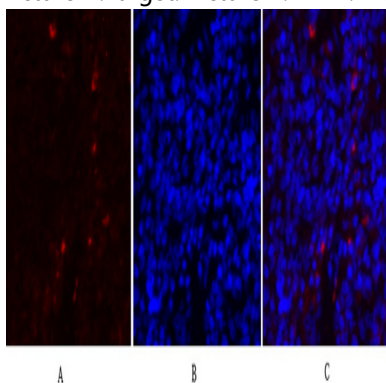
Immunofluorescence analysis of rat-lung tissue. 1, MMP-2 Polyclonal Antibody (red) was diluted at 1:200 (4°C, overnight). 2, Cy3 labeled Secondary antibody was diluted at 1:300 (room temperature, 50min). 3, Picture B: DAPI (blue) 10min.

Picture A: Target. Picture B: DAPI. Picture C: merge of A+B

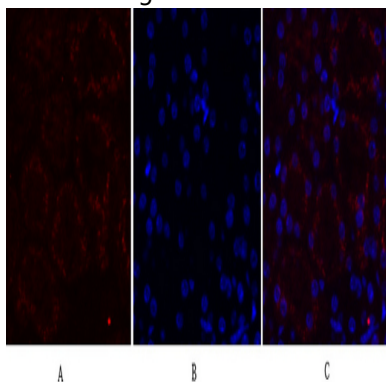
Product Name: MMP-2 Rabbit Polyclonal Antibody
Catalog #: APRab13988



Immunofluorescence analysis of rat-spleen tissue. 1, MMP-2 Polyclonal Antibody (red) was diluted at 1:200 (4°C, overnight). 2, Cy3 labeled Secondary antibody was diluted at 1:300 (room temperature, 50min). 3, Picture B: DAPI (blue) 10min. Picture A: Target. Picture B: DAPI. Picture C: merge of A+B

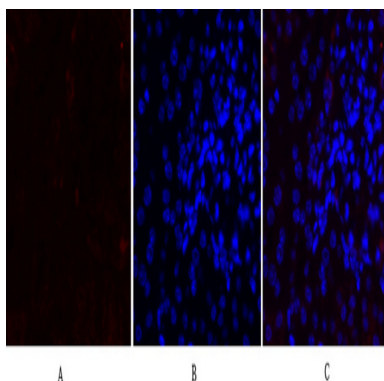


Immunofluorescence analysis of rat-spleen tissue. 1, MMP-2 Polyclonal Antibody (red) was diluted at 1:200 (4°C, overnight). 2, Cy3 labeled Secondary antibody was diluted at 1:300 (room temperature, 50min). 3, Picture B: DAPI (blue) 10min. Picture A: Target. Picture B: DAPI. Picture C: merge of A+B

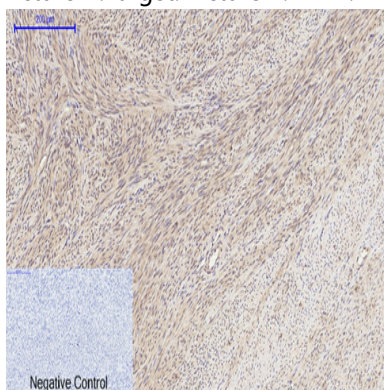


Immunofluorescence analysis of mouse-kidney tissue. 1, MMP-2 Polyclonal Antibody (red) was diluted at 1:200 (4°C, overnight). 2, Cy3 labeled Secondary antibody was diluted at 1:300 (room temperature, 50min). 3, Picture B: DAPI (blue) 10min. Picture A: Target. Picture B: DAPI. Picture C: merge of A+B

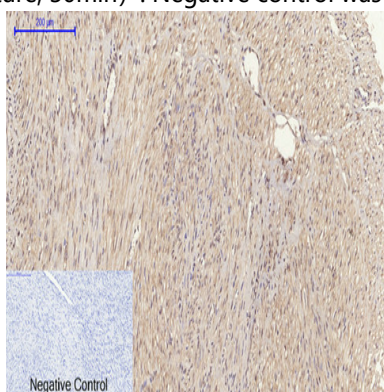
Product Name: MMP-2 Rabbit Polyclonal Antibody
Catalog #: APRab13988



Immunofluorescence analysis of mouse-kidney tissue. 1, MMP-2 Polyclonal Antibody (red) was diluted at 1:200 (4°C, overnight) . 2, Cy3 labeled Secondary antibody was diluted at 1:300 (room temperature, 50min) . 3, Picture B: DAPI (blue) 10min. Picture A: Target. Picture B: DAPI. Picture C: merge of A+B



Immunohistochemical analysis of paraffin-embedded Human-uterus tissue. 1, MMP-2 Polyclonal Antibody was diluted at 1:200 (4°C, overnight) . 2, Sodium citrate pH 6.0 was used for antibody retrieval (>98°C, 20min) . 3, Secondary antibody was diluted at 1:200 (room temperature, 30min) . Negative control was used by secondary antibody only.



Immunohistochemical analysis of paraffin-embedded Human-uterus-cancer tissue. 1, MMP-2 Polyclonal Antibody was diluted at 1:200 (4°C, overnight) . 2, Sodium citrate pH 6.0 was used for antibody retrieval (>98°C, 20min) . 3, Secondary antibody was diluted at 1:200 (room temperature, 30min) . Negative control was used by secondary antibody only.

Product Name: MMP-2 Rabbit Polyclonal Antibody
Catalog #: APRab13988



Note

For research use only.