

Product Name: MIXL1 Rabbit Polyclonal Antibody
Catalog #: APRab13922



Summary

Production Name	MIXL1 Rabbit Polyclonal Antibody
Description	Rabbit Polyclonal Antibody
Host	Rabbit
Application	WB,ELISA
Reactivity	Human,Mouse

Performance

Conjugation	Unconjugated
Modification	Unmodified
Isotype	IgG
Clonality	Polyclonal
Form	Liquid
Storage	Store at 4°C short term. Aliquot and store at -20°C long term. Avoid freeze/thaw cycles.
Buffer	Liquid in PBS containing 50% glycerol, and 0.02% New type preservative N.
Purification	Affinity purification

Immunogen

Gene Name	MIXL1 MIXL
Alternative Names	
Gene ID	83881.0
SwissProt ID	Q9H2W2. Synthesized peptide derived from human protein . at AA range: 90-170

Application

Dilution Ratio	WB 1:500-2000, ELISA 1:5000-20000
Molecular Weight	25kDa

Background

Mix paired-like homeobox(MIXL1) Homo sapiens Homeodomain proteins, such as MIXL1, are transcription factors that regulate cell fate during development (Hart et al., 2005 [PubMed 15982639]).[supplied by OMIM, Mar

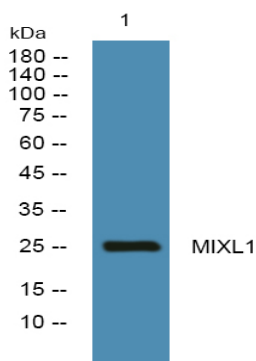
Product Name: MIXL1 Rabbit Polyclonal Antibody
Catalog #: AP Rab13922



2008],function:Transcription factor that play a central role in proper axial mesendoderm morphogenesis and endoderm formation. Required for efficient differentiation of cells from the primitive streak stage to blood, by acting early in the recruitment and/or expansion of mesodermal progenitors to the hemangioblastic and hematopoietic lineages. Also involved in the morphogenesis of the heart and the gut during embryogenesis. Acts as a negative regulator of brachyury expression.,PTM:Phosphorylated at multiple sites.,similarity:Belongs to the paired homeobox family.,similarity:Contains 1 homeobox DNA-binding domain.,tissue specificity:Restricted to progenitors and secondary lymph tissues. In normal hematopoiesis, it is restricted to immature B-and T-lymphoid cells. Present in differentiating embryonic stem cells (at protein level),

Research Area

Image Data



Western blot analysis of lysates from PC12 cells, primary antibody was diluted at 1:1000, 4° over night

Note

For research use only.