

**Product Name: MIG Rabbit Polyclonal Antibody**  
**Catalog #: APRab13902**



## Summary

<b>Production Name</b>	MIG Rabbit Polyclonal Antibody
<b>Description</b>	Rabbit Polyclonal Antibody
<b>Host</b>	Rabbit
<b>Application</b>	IHC-P,IF-P,IF-F,ICC/IF,ELISA
<b>Reactivity</b>	Human,Rat,Mouse

## Performance

<b>Conjugation</b>	Unconjugated
<b>Modification</b>	Unmodified
<b>Isotype</b>	IgG
<b>Clonality</b>	Polyclonal
<b>Form</b>	Liquid
<b>Storage</b>	Store at 4°C short term. Aliquot and store at -20°C long term. Avoid freeze/thaw cycles.
<b>Buffer</b>	Liquid in PBS containing 50% glycerol, 0.5% BSA and 0.02% New type preservative N.
<b>Purification</b>	Affinity purification

## Immunogen

<b>Gene Name</b>	CXCL9 CMK MIG SCYB9
<b>Alternative Names</b>	C-X-C motif chemokine 9 (Gamma-interferon-induced monokine;Monokine induced by interferon-gamma;HuMIG;MIG;Small-inducible cytokine B9)
<b>Gene ID</b>	4283.0
<b>SwissProt ID</b>	Q07325.Synthetic peptide from human protein at AA range: 90-125

## Application

<b>Dilution Ratio</b>	IHC-P 1:50-200, ELISA 1:10000-20000, IF-P/IF-F/ICC/IF 1:50-200
<b>Molecular Weight</b>	

## Background

**Product Name: MIG Rabbit Polyclonal Antibody**  
**Catalog #: APRab13902**

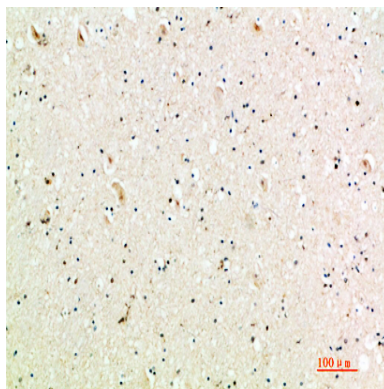


This antimicrobial gene encodes a protein thought to be involved in T cell trafficking. The encoded protein binds to C-X-C motif chemokine 3 and is a chemoattractant for lymphocytes but not for neutrophils. [provided by RefSeq, Sep 2014],function:Cytokine that affects the growth, movement, or activation state of cells that participate in immune and inflammatory response. Chemotactic for activated T-cells. Binds to CXCR3.,induction:By interferon gamma. The induction is enhanced by TNF-alpha in dermal fibroblasts and vein endothelial cells.,online information:CXCL9 entry,similarity:Belongs to the intercrine alpha (chemokine CxC) family.,

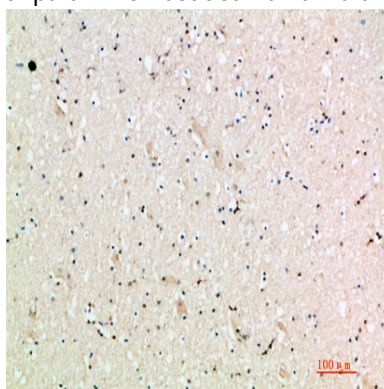
## Research Area

Cytokine-cytokine receptor interaction;Chemokine;Toll\_Like;

## Image Data



Immunohistochemical analysis of paraffin-embedded human-brain, antibody was diluted at 1:200



Immunohistochemical analysis of paraffin-embedded human-brain, antibody was diluted at 1:200

## Note

For research use only.