

**Product Name: Mic-1 Rabbit Polyclonal Antibody**  
**Catalog #: APRab13888**



## Summary

<b>Production Name</b>	Mic-1 Rabbit Polyclonal Antibody
<b>Description</b>	Rabbit Polyclonal Antibody
<b>Host</b>	Rabbit
<b>Application</b>	WB,ELISA,IHC-P
<b>Reactivity</b>	Human,Mouse

## Performance

<b>Conjugation</b>	Unconjugated
<b>Modification</b>	Unmodified
<b>Isotype</b>	IgG
<b>Clonality</b>	Polyclonal
<b>Form</b>	Liquid
<b>Storage</b>	Store at 4°C short term. Aliquot and store at -20°C long term. Avoid freeze/thaw cycles.
<b>Buffer</b>	Liquid in PBS containing 50% glycerol, 0.5% BSA and 0.02% New type preservative N.
<b>Purification</b>	Affinity purification

## Immunogen

<b>Gene Name</b>	C18orf8
<b>Alternative Names</b>	C18orf8; MIC1; Uncharacterized protein C18orf8; Colon cancer-associated protein Mic1; Mic-1
<b>Gene ID</b>	29919.0
<b>SwissProt ID</b>	Q96DM3.The antiserum was produced against synthesized peptide derived from human MIC1. AA range:591-640

## Application

<b>Dilution Ratio</b>	WB 1:500-2000, IHC-P 1:50-300, ELISA 2000-20000
<b>Molecular Weight</b>	75kDa

**Product Name: Mic-1 Rabbit Polyclonal Antibody**  
**Catalog #: APRab13888**

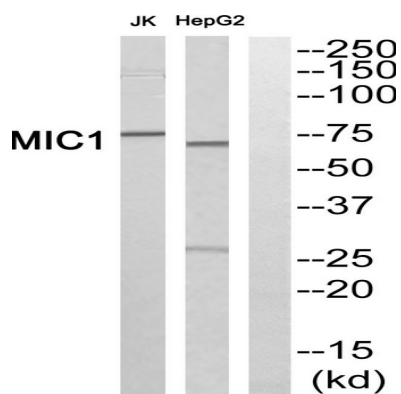


## Background

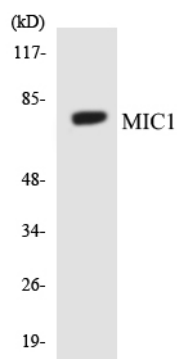
This gene encodes a colon cancer associated protein. [provided by RefSeq, Jan 2013],similarity:Contains 1 Mic1 domain.,

## Research Area

## Image Data



Western blot analysis of MIC1 Antibody. The lane on the right is blocked with the MIC1 peptide.



Western blot analysis of the lysates from HeLa cells using MIC1 antibody.

## Note

For research use only.