

Product Name: MIB1 Rabbit Polyclonal Antibody
Catalog #: APRab13886



Summary

Production Name	MIB1 Rabbit Polyclonal Antibody
Description	Rabbit Polyclonal Antibody
Host	Rabbit
Application	WB,IHC-P,IF-P,IF-F,ICC/IF,ELISA
Reactivity	Human,Mouse,Rat

Performance

Conjugation	Unconjugated
Modification	Unmodified
Isotype	IgG
Clonality	Polyclonal
Form	Liquid
Storage	Store at 4°C short term. Aliquot and store at -20°C long term. Avoid freeze/thaw cycles.
Buffer	Liquid in PBS containing 50% glycerol, 0.5% BSA and 0.02% New type preservative N.
Purification	Affinity purification

Immunogen

Gene Name	MIB1
Alternative Names	MIB1 DIP1 KIAA1323 ZZANK2
Gene ID	57534.0
SwissProt ID	Q86YT6.Synthetic peptide from human protein at AA range: 901-950

Application

Dilution Ratio	IHC-P 100-300.WB 1:500-2000, ELISA 1:10000-20000, IF-P/IF-F/ICC/IF 1:50-200
Molecular Weight	130kDa

Background

This gene encodes a protein containing multiple ankyrin repeats and RING finger domains that functions as an E3 ubiquitin

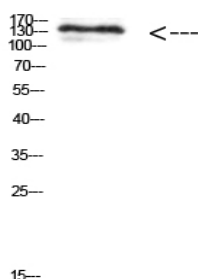
Product Name: MIB1 Rabbit Polyclonal Antibody
Catalog #: APRab13886



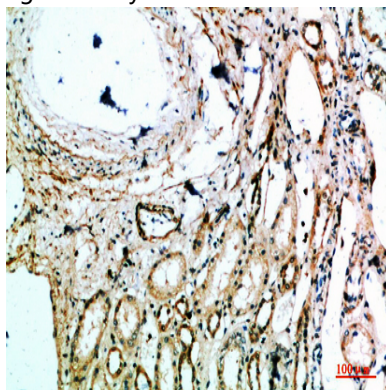
ligase. The encoded protein positively regulates Notch signaling by ubiquitinating the Notch receptors, thereby facilitating their endocytosis. This protein may also promote the ubiquitination and degradation of death-associated protein kinase 1 (DAPK1). [provided by RefSeq, Jun 2013],function:E3 ubiquitin-protein ligase that mediates ubiquitination of Delta receptors, which act as ligands of Notch proteins. Positively regulates the Delta-mediated Notch signaling by ubiquitinating the intracellular domain of Delta, leading to endocytosis of Delta receptors. Probably mediates ubiquitination and subsequent proteasomal degradation of DAPK1, thereby antagonizing anti-apoptotic effects of DAPK1 to promote TNF-induced apoptosis.,miscellaneous:In epilepsy brain tissue, levels of expression are increased in the cytoplasm and microsomal fractions (endoplasmic reticulum),,pathway:Protein modification; protein ubiquitination.,PTM:Ubiquitinated. Possibly via autoubiquitination.,similarity:Contains 1 ZZ-type zinc finger.,similarity:Contains 2 MIB/HERC2 domains.,similarity:Contains 3 RING-type zinc fingers.,similarity:Contains 9 ANK repeats.,subcellular location:Localizes to the plasma membrane (By similarity). According to PubMed:15048887, it is mitochondrial, however such localization remains unclear.,tissue specificity:Widely expressed at low level. Expressed at higher level in spinal cord, ovary, whole brain, and all specific brain regions examined.,

Research Area

Image Data



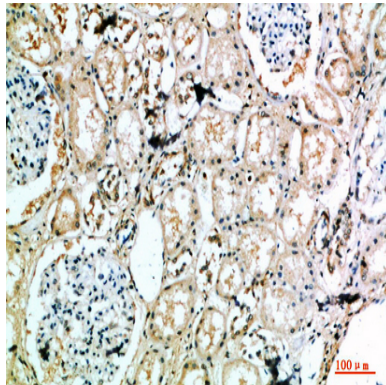
Western Blot analysis of 293t cells using Antibody diluted at 1000. Secondary antibody was diluted at 1:20000



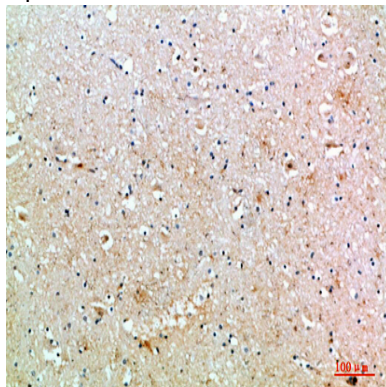
Product Name: MIB1 Rabbit Polyclonal Antibody
Catalog #: APRab13886



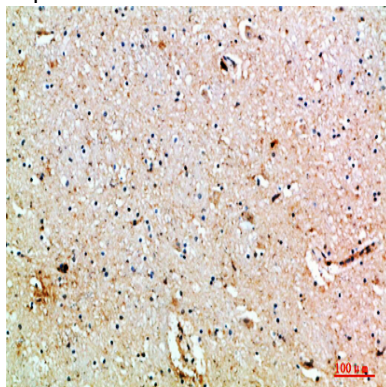
Immunohistochemical analysis of paraffin-embedded human-kidney, antibody was diluted at 1:200



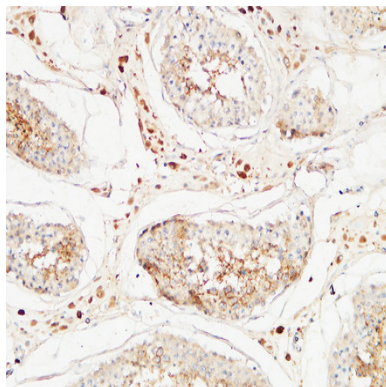
Immunohistochemical analysis of paraffin-embedded human-kidney, antibody was diluted at 1:200



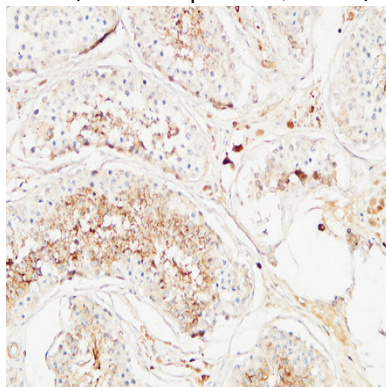
Immunohistochemical analysis of paraffin-embedded human-brain, antibody was diluted at 1:200



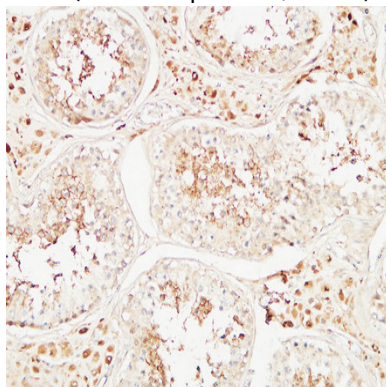
Immunohistochemical analysis of paraffin-embedded human-brain, antibody was diluted at 1:200



Immunohistochemical analysis of paraffin-embedded Human testis. 1, Antibody was diluted at 1:200 (4°,overnight) . 2, High-pressure and temperature EDTA, pH8.0 was used for antigen retrieval. 3,Secondary antibody was diluted at 1:200 (room temperature, 30min) .

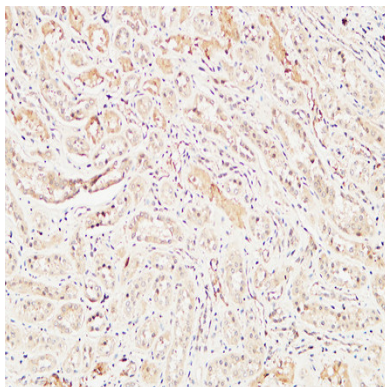


Immunohistochemical analysis of paraffin-embedded Human testis. 1, Antibody was diluted at 1:200 (4°,overnight) . 2, High-pressure and temperature EDTA, pH8.0 was used for antigen retrieval. 3,Secondary antibody was diluted at 1:200 (room temperature, 30min) .



Immunohistochemical analysis of paraffin-embedded Human testis. 1, Antibody was diluted at 1:200 (4°,overnight) . 2, High-pressure and temperature EDTA, pH8.0 was used for antigen retrieval. 3,Secondary antibody was diluted at 1:200 (room temperature, 30min) .

Product Name: MIB1 Rabbit Polyclonal Antibody
Catalog #: APRab13886



Immunohistochemical analysis of paraffin-embedded Human kidney. 1, Antibody was diluted at 1:200 (4°, overnight) . 2, High-pressure and temperature EDTA, pH8.0 was used for antigen retrieval. 3, Secondary antibody was diluted at 1:200 (room temperature, 30min) .

Note

For research use only.