

**Product Name: MGST1 Rabbit Polyclonal Antibody**  
**Catalog #: APRab13873**



## Summary

<b>Production Name</b>	MGST1 Rabbit Polyclonal Antibody
<b>Description</b>	Rabbit Polyclonal Antibody
<b>Host</b>	Rabbit
<b>Application</b>	WB,IHC-P
<b>Reactivity</b>	Human,Mouse

## Performance

<b>Conjugation</b>	Unconjugated
<b>Modification</b>	Unmodified
<b>Isotype</b>	IgG
<b>Clonality</b>	Polyclonal
<b>Form</b>	Liquid
<b>Storage</b>	Store at 4°C short term. Aliquot and store at -20°C long term. Avoid freeze/thaw cycles.
<b>Buffer</b>	Liquid in PBS containing 50% glycerol, 0.5% BSA and 0.02% New type preservative N.
<b>Purification</b>	Affinity purification

## Immunogen

<b>Gene Name</b>	MGST1
<b>Alternative Names</b>	MGST1; GST12; MGST; Microsomal glutathione S-transferase 1; Microsomal GST-1; Microsomal GST-I
<b>Gene ID</b>	4257.0
<b>SwissProt ID</b>	P10620.The antiserum was produced against synthesized peptide derived from human MGST1. AA range:42-91

## Application

<b>Dilution Ratio</b>	WB 1:500-2000, IHC-P 1:50-300
<b>Molecular Weight</b>	18kDa

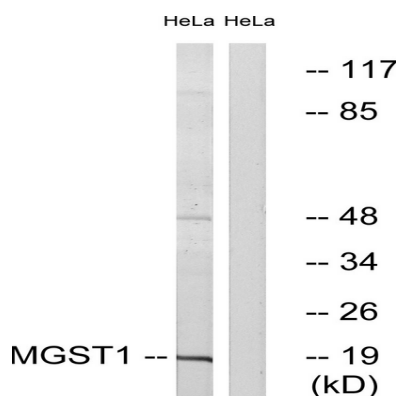
## Background

The MAPEG (Membrane Associated Proteins in Eicosanoid and Glutathione metabolism) family consists of six human proteins, two of which are involved in the production of leukotrienes and prostaglandin E, important mediators of inflammation. Other family members, demonstrating glutathione S-transferase and peroxidase activities, are involved in cellular defense against toxic, carcinogenic, and pharmacologically active electrophilic compounds. This gene encodes a protein that catalyzes the conjugation of glutathione to electrophiles and the reduction of lipid hydroperoxides. This protein is localized to the endoplasmic reticulum and outer mitochondrial membrane where it is thought to protect these membranes from oxidative stress. Several transcript variants, some non-protein coding and some protein coding, have been found for this gene. [provided by RefSeq, May 2012], catalytic activity:  $\text{RX} + \text{glutathione} = \text{HX} + \text{R-S-glutathione}$ , enzyme regulation: Activated by N-ethylmaleimide, except in the testis, function: Conjugation of reduced glutathione to a wide number of exogenous and endogenous hydrophobic electrophiles. Has a wide substrate specificity, similarity: Belongs to the MAPEG family, subunit: Homotrimer, tissue specificity: Highly expressed in liver.

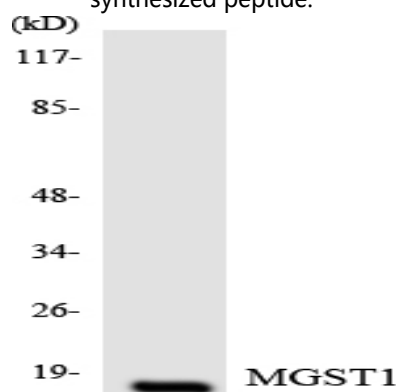
## Research Area

Glutathione metabolism; Metabolism of xenobiotics by cytochrome P450; Drug metabolism;

## Image Data



Western blot analysis of lysates from HeLa cells, using MGST1 Antibody. The lane on the right is blocked with the synthesized peptide.



**Product Name: MGST1 Rabbit Polyclonal Antibody**  
**Catalog #: APRab13873**



---

Western blot analysis of the lysates from RAW264.7 cells using MGST1 antibody.

**Note**

For research use only.