

Summary

Production Name	MGMT Rabbit Polyclonal Antibody
Description	Rabbit Polyclonal Antibody
Host	Rabbit
Application	WB,IHC-P,IF-P,IF-F,ICC/IF,ELISA
Reactivity	Human,Rat

Performance

Conjugation	Unconjugated
Modification	Unmodified
Isotype	IgG
Clonality	Polyclonal
Form	Liquid
Storage	Store at 4°C short term. Aliquot and store at -20°C long term. Avoid freeze/thaw cycles.
Buffer	Liquid in PBS containing 50% glycerol, 0.5% BSA and 0.02% New type preservative N.
Purification	Affinity purification

Immunogen

Gene Name	MGMT
Alternative Names	MGMT; Methylated-DNA--protein-cysteine methyltransferase; 6-O-methylguanine-DNA methyltransferase; MGMT; O-6-methylguanine-DNA-alkyltransferase
Gene ID	4255.0
SwissProt ID	P16455.The antiserum was produced against synthesized peptide derived from human MGMT. AA range:1-50

Application

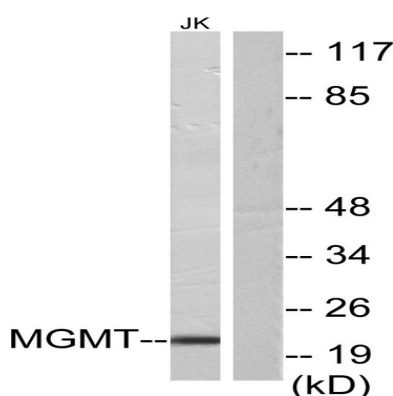
Dilution Ratio	WB 1:500-1:2000, IHC-P 1:100-1:300, ELISA 1:5000, IF-P/IF-F/ICC/IF 1:50-200
Molecular Weight	22kDa

Background

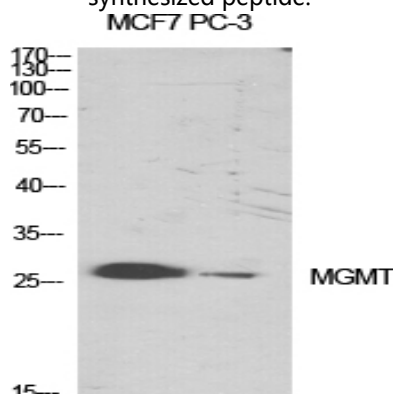
Alkylating agents are potent carcinogens that can result in cell death, mutation and cancer. The protein encoded by this gene is a DNA repair protein that is involved in cellular defense against mutagenesis and toxicity from alkylating agents. The protein catalyzes transfer of methyl groups from O(6)-alkylguanine and other methylated moieties of the DNA to its own molecule, which repairs the toxic lesions. Methylation of the genes promoter has been associated with several cancer types, including colorectal cancer, lung cancer, lymphoma and glioblastoma. [provided by RefSeq, Sep 2015], catalytic activity: DNA (containing 6-O-methylguanine) + protein L-cysteine = DNA (without 6-O-methylguanine) + protein S-methyl-L-cysteine., cofactor: Binds 1 zinc ion., function: Involved in the cellular defense against the biological effects of O6-methylguanine (O6-MeG) in DNA. Repairs alkylated guanine in DNA by stoichiometrically transferring the alkyl group at the O-6 position to a cysteine residue in the enzyme. This is a suicide reaction: the enzyme is irreversibly inactivated., similarity: Belongs to the MGMT family.,

Research Area

Image Data



Western blot analysis of lysates from Jurkat cells, using MGMT Antibody. The lane on the right is blocked with the synthesized peptide.



Western Blot analysis of various cells using MGMT Polyclonal Antibody diluted at 1: 1000 cells nucleus extracted by Minute

Product Name: MGMT Rabbit Polyclonal Antibody
Catalog #: APRab13869



TM Cytoplasmic and Nuclear Fractionation kit (SC-003, Invent biotech, MN, USA) .



Western Blot analysis of Jurkat cells using MGMT Polyclonal Antibody diluted at 1: 1000 cells nucleus extracted by Minute
TM Cytoplasmic and Nuclear Fractionation kit (SC-003, Invent biotech, MN, USA) .

Note

For research use only.