

Product Name: mGluR-8 Rabbit Polyclonal Antibody
Catalog #: APRab13866



Summary

Production Name	mGluR-8 Rabbit Polyclonal Antibody
Description	Rabbit Polyclonal Antibody
Host	Rabbit
Application	WB,IHC-P,IF-P,IF-F,ICC/IF,ELISA
Reactivity	Human,Mouse,Rat

Performance

Conjugation	Unconjugated
Modification	Unmodified
Isotype	IgG
Clonality	Polyclonal
Form	Liquid
Storage	Store at 4°C short term. Aliquot and store at -20°C long term. Avoid freeze/thaw cycles.
Buffer	Liquid in PBS containing 50% glycerol, 0.5% BSA and 0.02% New type preservative N.
Purification	Affinity purification

Immunogen

Gene Name	GRM8
Alternative Names	GRM8; GPRC1H; MGLUR8; Metabotropic glutamate receptor 8; mGluR8
Gene ID	2918.0
SwissProt ID	O00222.The antiserum was produced against synthesized peptide derived from human mGluR8. AA range:841-890

Application

Dilution Ratio	WB 1:500-1:2000, IHC-P 1:100-1:300, ELISA 1:10000, IF-P/IF-F/ICC/IF 1:50-200
Molecular Weight	100kDa

Background

Product Name: mGluR-8 Rabbit Polyclonal Antibody
Catalog #: AP Rab13866

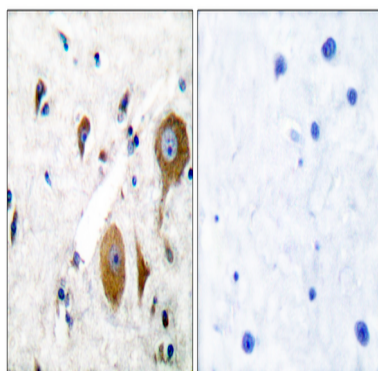


glutamate metabotropic receptor 8 (GRM8) Homo sapiens L-glutamate is the major excitatory neurotransmitter in the central nervous system and activates both ionotropic and metabotropic glutamate receptors. Glutamatergic neurotransmission is involved in most aspects of normal brain function and can be perturbed in many neuropathologic conditions. The metabotropic glutamate receptors are a family of G protein-coupled receptors, that have been divided into 3 groups on the basis of sequence homology, putative signal transduction mechanisms, and pharmacologic properties. Group I includes GRM1 and GRM5 and these receptors have been shown to activate phospholipase C. Group II includes GRM2 and GRM3 while Group III includes GRM4, GRM6, GRM7 and GRM8. Group II and III receptors are linked to the inhibition of the cyclic AMP cascade but differ in their agonist selectivities. Alternatively spliced transcript variants encoding different isoforms have been identified. Receptor for glutamate. The activity of this receptor is mediated by a G-protein that inhibits adenylate cyclase activity., similarity: Belongs to the G-protein coupled receptor 3 family., subunit: Interacts with PICK1.,

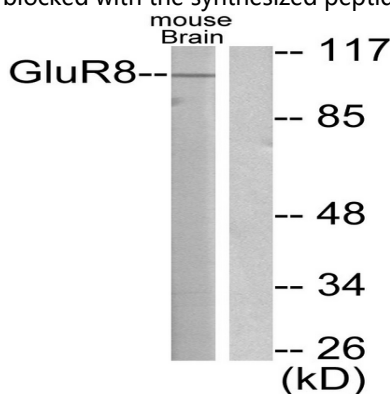
Research Area

Neuroactive ligand-receptor interaction;

Image Data



Immunohistochemistry analysis of paraffin-embedded human brain tissue, using mGluR8 Antibody. The picture on the right is blocked with the synthesized peptide.



Western blot analysis of lysates from mouse brain, using mGluR8 Antibody. The lane on the right is blocked with the

Product Name: mGluR-8 Rabbit Polyclonal Antibody
Catalog #: APRab13866



synthesized peptide.

Note

For research use only.