

Product Name: MEF-2B Rabbit Polyclonal Antibody
Catalog #: APRab13784



Summary

Production Name	MEF-2B Rabbit Polyclonal Antibody
Description	Rabbit Polyclonal Antibody
Host	Rabbit
Application	WB,IHC-P,IF-P,IF-F,ICC/IF,ELISA
Reactivity	Human,Mouse

Performance

Conjugation	Unconjugated
Modification	Unmodified
Isotype	IgG
Clonality	Polyclonal
Form	Liquid
Storage	Store at 4°C short term. Aliquot and store at -20°C long term. Avoid freeze/thaw cycles.
Buffer	Liquid in PBS containing 50% glycerol, 0.5% BSA and 0.02% New type preservative N.
Purification	Affinity purification

Immunogen

Gene Name	MEF2B
Alternative Names	MEF2B; XMEF2; Myocyte-specific enhancer factor 2B; RSRFR2; Serum response factor-like protein 2
Gene ID	4207.0
SwissProt ID	Q02080.The antiserum was produced against synthesized peptide derived from human MEF2B. AA range:51-100

Application

Dilution Ratio	WB 1:500-1:2000, IHC-P 1:100-1:300, ELISA 1:10000, IF-P/IF-F/ICC/IF 1:50-200
Molecular Weight	38kDa

Product Name: MEF-2B Rabbit Polyclonal Antibody
Catalog #: APRab13784



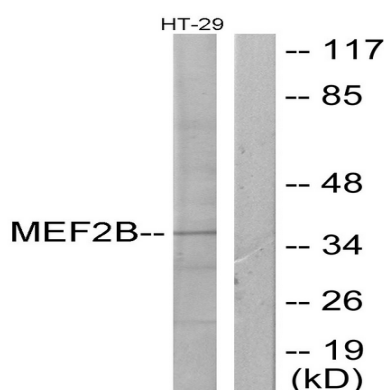
Background

This gene represents numerous read-through transcripts that span GenelD:729991 and 100271849. Many read-through transcripts are predicted to be nonsense-mediated decay (NMD) candidates, and are thought to be non-coding. Some transcripts are predicted to be capable of translation reinitiation at a downstream AUG, resulting in expression of at least one isoform of myocyte enhancer factor 2B (MEF2B) from this read-through locus. At least one additional MEF2B variant and isoform can be expressed from a downstream promoter, and is annotated on GenelD:100271849. [provided by RefSeq, Oct 2010],function:Transcriptional activator which binds specifically to the MEF2 element, 5'-YTA[AT](4)TAR-3', found in numerous muscle-specific genes. Activates transcription via this element. May be involved in muscle-specific and/or growth factor-related transcription.,similarity:Belongs to the MEF2 family.,similarity:Contains 1 MADS-box domain.,similarity:Contains 1 Mef2-type DNA-binding domain.,subunit:Interacts with HDAC7 (By similarity). Heterodimer. Interacts with HDAC9.,tissue specificity:Expressed in skeletal and cardiac muscle and brain.,

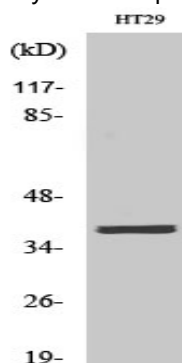
Research Area

AMPK; Protein_Acetylation

Image Data



Western blot analysis of lysates from HT-29 cells, using MEF2B Antibody. The lane on the right is blocked with the synthesized peptide.



Western Blot analysis of various cells using MEF-2B Polyclonal Antibody cells nucleus extracted by Minute TM Cytoplasmic

Product Name: MEF-2B Rabbit Polyclonal Antibody
Catalog #: APRab13784



and Nuclear Fractionation kit (SC-003, Invent biotech, MN, USA) .

Note

For research use only.