

Product Name: ME3 Rabbit Polyclonal Antibody
Catalog #: APRab13764



Summary

Production Name	ME3 Rabbit Polyclonal Antibody
Description	Rabbit Polyclonal Antibody
Host	Rabbit
Application	WB,IHC-P,IF-P,IF-F,ICC/IF,ELISA
Reactivity	Human,Mouse

Performance

Conjugation	Unconjugated
Modification	Unmodified
Isotype	IgG
Clonality	Polyclonal
Form	Liquid
Storage	Store at 4°C short term. Aliquot and store at -20°C long term. Avoid freeze/thaw cycles.
Buffer	Liquid in PBS containing 50% glycerol, 0.5% BSA and 0.02% New type preservative N.
Purification	Affinity purification

Immunogen

Gene Name	ME3
Alternative Names	ME3; NADP-dependent malic enzyme; mitochondrial; NADP-ME; Malic enzyme 3
Gene ID	10873.0
SwissProt ID	Q16798.The antiserum was produced against synthesized peptide derived from human ME3. AA range:545-594

Application

Dilution Ratio	WB 1:500-1:2000, IHC-P 1:100-1:300, ELISA 1:40000, IF-P/IF-F/ICC/IF 1:50-200
Molecular Weight	67kDa

Background

Product Name: ME3 Rabbit Polyclonal Antibody
Catalog #: APRab13764

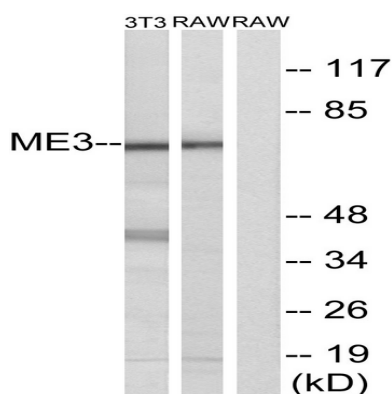


Malic enzyme catalyzes the oxidative decarboxylation of malate to pyruvate using either NAD⁺ or NADP⁺ as a cofactor. Mammalian tissues contain 3 distinct isoforms of malic enzyme: a cytosolic NADP(+)-dependent isoform, a mitochondrial NADP(+)-dependent isoform, and a mitochondrial NAD(+)-dependent isoform. This gene encodes a mitochondrial NADP(+)-dependent isoform. Multiple alternatively spliced transcript variants have been found for this gene, but the biological validity of some variants has not been determined. [provided by RefSeq, Jul 2008], catalytic activity: (S)-malate + NADP(+) = pyruvate + CO(2) + NADPH., cofactor: Divalent metal cations. Prefers magnesium or manganese., similarity: Belongs to the malic enzymes family., tissue specificity: Expressed predominantly in organs with a low-division rate.,

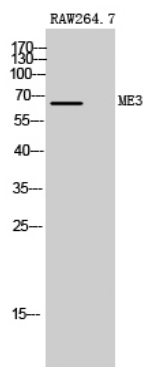
Research Area

Pyruvate metabolism;

Image Data

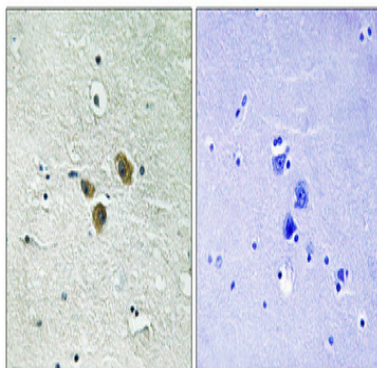


Western blot analysis of lysates from RAW264.7 and NIH/3T3 cells, using ME3 Antibody. The lane on the right is blocked with the synthesized peptide.



Western Blot analysis of RAW264.7 cells using ME3 Polyclonal Antibody

Product Name: ME3 Rabbit Polyclonal Antibody
Catalog #: APRab13764



Immunohistochemical analysis of paraffin-embedded Human brain. Antibody was diluted at 1:100 (4°,overnight) . High-pressure and temperature Tris-EDTA,pH8.0 was used for antigen retrieval. Negative contrl (right) obtained from antibody was pre-absorbed by immunogen peptide.

Note

For research use only.