

**Product Name: MCT13 Rabbit Polyclonal Antibody**  
**Catalog #: APRab13740**



## Summary

<b>Production Name</b>	MCT13 Rabbit Polyclonal Antibody
<b>Description</b>	Rabbit Polyclonal Antibody
<b>Host</b>	Rabbit
<b>Application</b>	WB,ELISA
<b>Reactivity</b>	Human,Rat,Mouse

## Performance

<b>Conjugation</b>	Unconjugated
<b>Modification</b>	Unmodified
<b>Isotype</b>	IgG
<b>Clonality</b>	Polyclonal
<b>Form</b>	Liquid
<b>Storage</b>	Store at 4°C short term. Aliquot and store at -20°C long term. Avoid freeze/thaw cycles.
<b>Buffer</b>	Liquid in PBS containing 50% glycerol, 0.5% BSA and 0.02% New type preservative N.
<b>Purification</b>	Affinity purification

## Immunogen

<b>Gene Name</b>	SLC16A13
<b>Alternative Names</b>	SLC16A13; MCT13; Monocarboxylate transporter 13; MCT 13; Solute carrier family 16 member 13
<b>Gene ID</b>	201232.0
<b>SwissProt ID</b>	Q7RTY0.The antiserum was produced against synthesized peptide derived from human MOT13. AA range:377-426

## Application

<b>Dilution Ratio</b>	WB 1:500-1:2000, ELISA 1:5000.Not yet tested in other applications.
<b>Molecular Weight</b>	40kDa

**Product Name: MCT13 Rabbit Polyclonal Antibody**  
**Catalog #: AP Rab13740**



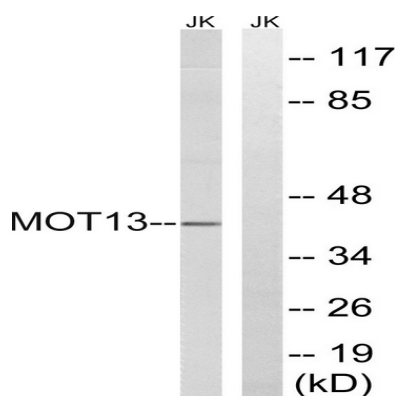
## Background

function: Proton-linked monocarboxylate transporter. Catalyzes the rapid transport across the plasma membrane of many monocarboxylates., similarity: Belongs to the major facilitator superfamily. Monocarboxylate porter (TC 2.A.1.13)

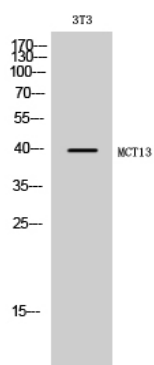
family., function: Proton-linked monocarboxylate transporter. Catalyzes the rapid transport across the plasma membrane of many monocarboxylates., similarity: Belongs to the major facilitator superfamily. Monocarboxylate porter (TC 2.A.1.13) family.,

## Research Area

## Image Data



Western blot analysis of lysates from Jurkat cells, using MOT13 Antibody. The lane on the right is blocked with the synthesized peptide.



Western Blot analysis of 3T3 cells using MCT13 Polyclonal Antibody

## Note

For research use only.