

Summary

Production Name	M-CSF Rabbit Polyclonal Antibody
Description	Rabbit Polyclonal Antibody
Host	Rabbit
Application	WB,IHC-P,IF-P,IF-F,ICC/IF,ELISA
Reactivity	Human,Rat,Mouse

Performance

Conjugation	Unconjugated
Modification	Unmodified
Isotype	IgG
Clonality	Polyclonal
Form	Liquid
Storage	Store at 4°C short term. Aliquot and store at -20°C long term. Avoid freeze/thaw cycles.
Buffer	Liquid in PBS containing 50% glycerol, 0.5% BSA and 0.02% New type preservative N.
Purification	Affinity purification

Immunogen

Gene Name	CSF1
Alternative Names	CSF1; Macrophage colony-stimulating factor 1; CSF-1; M-CSF; MCSF; Lanimostim
Gene ID	1435.0
SwissProt ID	P09603.The antiserum was produced against synthesized peptide derived from the C-terminal region of human CSF1. AA range:505-554

Application

Dilution Ratio	WB 1:500-1:2000, IHC-P 1:100-1:300, ELISA 1:10000, IF-P/IF-F/ICC/IF 1:50-200
Molecular Weight	48kDa

Background

Product Name: M-CSF Rabbit Polyclonal Antibody
Catalog #: AP Rab13737

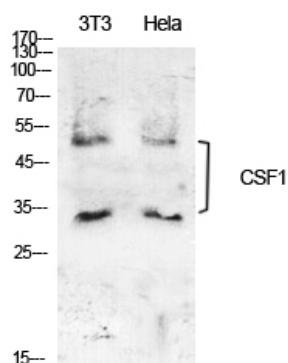


The protein encoded by this gene is a cytokine that controls the production, differentiation, and function of macrophages. The active form of the protein is found extracellularly as a disulfide-linked homodimer, and is thought to be produced by proteolytic cleavage of membrane-bound precursors. The encoded protein may be involved in development of the placenta. Alternate splicing results in multiple transcript variants. [provided by RefSeq, Sep 2011],function:Granulocyte/macrophage colony-stimulating factors are cytokines that act in hematopoiesis by controlling the production, differentiation, and function of 2 related white cell populations of the blood, the granulocytes and the monocytes-macrophages. CSF-1 induces cells of the monocyte/macrophage lineage. It plays a role in immunological defenses, bone metabolism, lipoproteins clearance, fertility and pregnancy.,PTM:Glycosylation and proteolytic cleavage yield different soluble forms. A high molecular weight soluble form is a proteoglycan containing chondroitin sulfate.,PTM:Isoform 1 is N- and O-glycosylated. Isoform 3 is N-glycosylated.,subunit:Homodimer or heterodimer; disulfide-linked.,

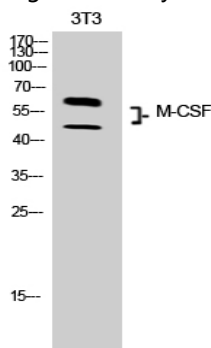
Research Area

Cytokine-cytokine receptor interaction;Hematopoietic cell lineage;

Image Data

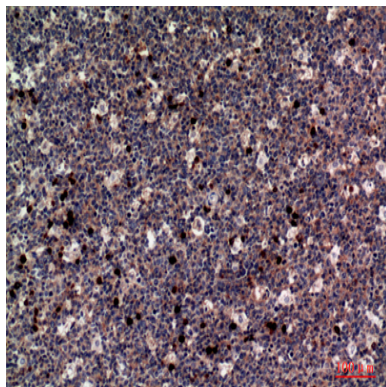


Western Blot analysis of NIH-3T3, HeLa cells using M-CSF Polyclonal Antibody.. Secondary antibody was diluted at 1:20000

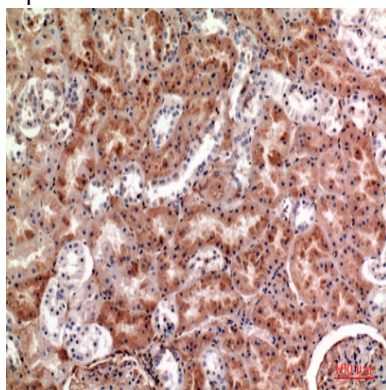


Western Blot analysis of 3T3 cells using M-CSF Polyclonal Antibody. Secondary antibody was diluted at 1:20000

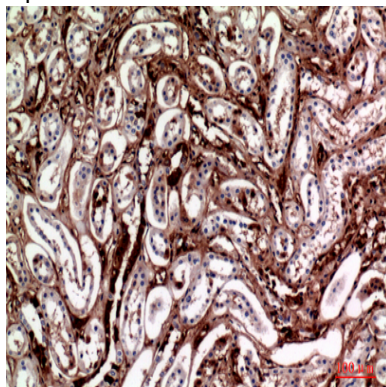
Product Name: M-CSF Rabbit Polyclonal Antibody
Catalog #: APRab13737



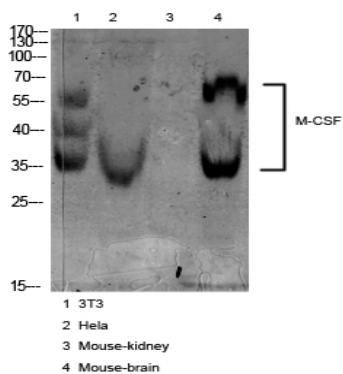
Immunohistochemical analysis of paraffin-embedded human-tonsils, antibody was diluted at 1:100



Immunohistochemical analysis of paraffin-embedded human-kidney, antibody was diluted at 1:100



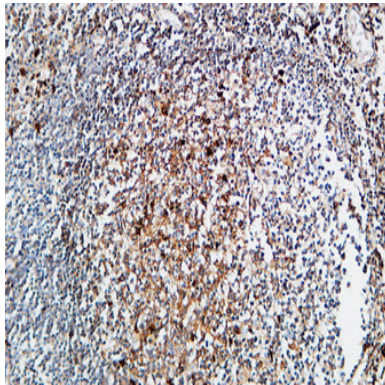
Immunohistochemical analysis of paraffin-embedded human-kidney, antibody was diluted at 1:100



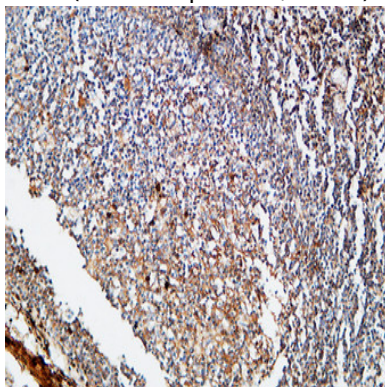
Product Name: M-CSF Rabbit Polyclonal Antibody
Catalog #: APRab13737



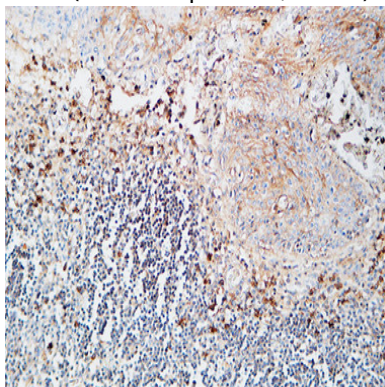
Western blot analysis of various cell Lysate, antibody was diluted at 1:1000. Secondary antibody was diluted at 1:20000



Immunohistochemical analysis of paraffin-embedded Human Amygdala. 1, Antibody was diluted at 1:200 (4°,overnight) . 2, High-pressure and temperature EDTA, pH8.0 was used for antigen retrieval. 3,Secondary antibody was diluted at 1:200 (room temperature, 30min) .



Immunohistochemical analysis of paraffin-embedded Human Amygdala. 1, Antibody was diluted at 1:200 (4°,overnight) . 2, High-pressure and temperature EDTA, pH8.0 was used for antigen retrieval. 3,Secondary antibody was diluted at 1:200 (room temperature, 30min) .



Immunohistochemical analysis of paraffin-embedded Human Amygdala. 1, Antibody was diluted at 1:200 (4°,overnight) . 2, High-pressure and temperature EDTA, pH8.0 was used for antigen retrieval. 3,Secondary antibody was diluted at 1:200 (room temperature, 30min) .

Product Name: M-CSF Rabbit Polyclonal Antibody
Catalog #: APRab13737



Note

For research use only.