

## Summary

<b>Production Name</b>	MCP-3 Rabbit Polyclonal Antibody
<b>Description</b>	Rabbit Polyclonal Antibody
<b>Host</b>	Rabbit
<b>Application</b>	IHC-P,IF-P,IF-F,ICC/IF,ELISA
<b>Reactivity</b>	Human,Rat,Mouse

## Performance

<b>Conjugation</b>	Unconjugated
<b>Modification</b>	Unmodified
<b>Isotype</b>	IgG
<b>Clonality</b>	Polyclonal
<b>Form</b>	Liquid
<b>Storage</b>	Store at 4°C short term. Aliquot and store at -20°C long term. Avoid freeze/thaw cycles.
<b>Buffer</b>	Liquid in PBS containing 50% glycerol, 0.5% BSA and 0.02% New type preservative N.
<b>Purification</b>	Affinity purification

## Immunogen

<b>Gene Name</b>	CCL7 MCP3 SCYA6 SCYA7
<b>Alternative Names</b>	C-C motif chemokine 7 (Monocyte chemoattractant protein 3;Monocyte chemotactic protein 3;MCP-3;NC28;Small-inducible cytokine A7)
<b>Gene ID</b>	6354.0
<b>SwissProt ID</b>	P80098.Synthetic peptide from human protein at AA range: 50-99

## Application

<b>Dilution Ratio</b>	IHC-P 1:50-200, ELISA 1:10000-20000, IF-P/IF-F/ICC/IF 1:50-200
<b>Molecular Weight</b>	

## Background

**Product Name: MCP-3 Rabbit Polyclonal Antibody**  
**Catalog #: AP Rab13734**

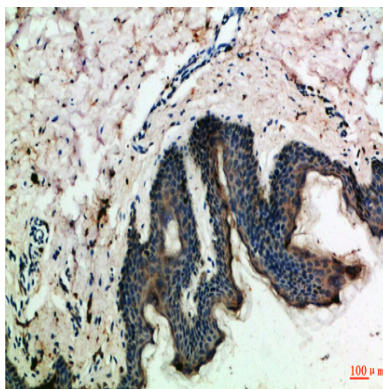


This gene encodes monocyte chemotactic protein 3, a secreted chemokine which attracts macrophages during inflammation and metastasis. It is a member of the C-C subfamily of chemokines which are characterized by having two adjacent cysteine residues. The protein is an in vivo substrate of matrix metalloproteinase 2, an enzyme which degrades components of the extracellular matrix. This gene is part of a cluster of C-C chemokine family members on chromosome 17q. [provided by RefSeq, Jul 2008],function:Chemotactic factor that attracts monocytes and eosinophils, but not neutrophils. Augments monocyte anti-tumor activity. Also induces the release of gelatinase B. This protein can bind heparin. Binds to CCR1, CCR2 and CCR3.,online information:CCL7 entry,PTM:O-glycosylated.,similarity:Belongs to the intercrine beta (chemokine CC) family.,subunit:Monomer.,

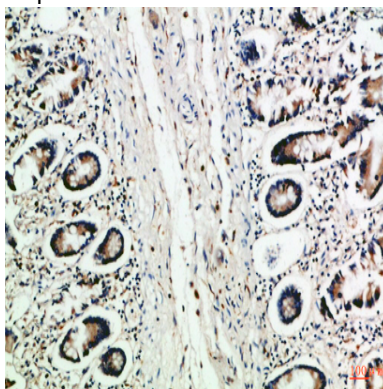
## Research Area

Cytokine-cytokine receptor interaction;Chemokine;NOD-like receptor;

## Image Data



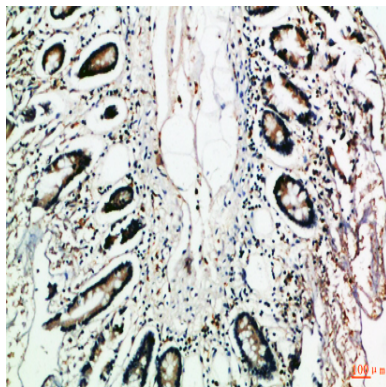
Immunohistochemical analysis of paraffin-embedded Human-skin, antibody was diluted at 1:100



Immunohistochemical analysis of paraffin-embedded Human-colon, antibody was diluted at 1:100

**Product Name: MCP-3 Rabbit Polyclonal Antibody**  
**Catalog #: APRab13734**

---



Immunohistochemical analysis of paraffin-embedded Human-colon, antibody was diluted at 1:100

### **Note**

For research use only.