

Product Name: MALT1 Rabbit Polyclonal Antibody
Catalog #: APRab13608



Summary

Production Name	MALT1 Rabbit Polyclonal Antibody
Description	Rabbit Polyclonal Antibody
Host	Rabbit
Application	WB,IHC-P,IF-P,IF-F,ICC/IF,ELISA
Reactivity	Human,Mouse

Performance

Conjugation	Unconjugated
Modification	Unmodified
Isotype	IgG
Clonality	Polyclonal
Form	Liquid
Storage	Store at 4°C short term. Aliquot and store at -20°C long term. Avoid freeze/thaw cycles.
Buffer	Liquid in PBS containing 50% glycerol, 0.5% BSA and 0.02% New type preservative N.
Purification	Affinity purification

Immunogen

Gene Name	MALT1
Alternative Names	MALT1; MLT; Mucosa-associated lymphoid tissue lymphoma translocation protein 1; MALT lymphoma-associated translocation; Paracaspase
Gene ID	10892.0
SwissProt ID	Q9UDY8.The antiserum was produced against synthesized peptide derived from human MALT1. AA range:301-350

Application

Dilution Ratio	WB 1:500-1:2000, IHC-P 1:100-1:300, IF-P/IF-F/ICC/IF 1:200-1:1000, ELISA 1:10000.Not yet tested in other applications.
Molecular Weight	90kDa

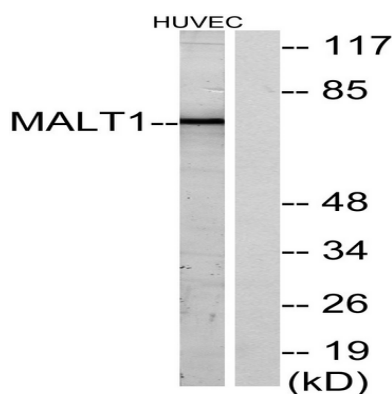
Background

This gene has been found to be recurrently rearranged in chromosomal translocation with two other genes - baculoviral IAP repeat-containing protein 3 (also known as apoptosis inhibitor 2) and immunoglobulin heavy chain locus - in mucosa-associated lymphoid tissue lymphomas. The protein encoded by this gene may play a role in NF-kappaB activation. Two alternatively spliced transcript variants encoding different isoforms have been described for this gene. [provided by RefSeq, Jul 2008],disease:A chromosomal aberration involving MALT1 is recurrent in low-grade mucosa-associated lymphoid tissue (MALT lymphoma). Translocation t(11;18)(q21;q21) with BIRC2. This translocation is found in approximately 50% of cytogenetically abnormal low-grade MALT lymphoma.,function:Enhances BCL10-induced activation of NF-kappa-B. Involved in nuclear export of BCL10. Binds to TRAF6, inducing TRAF6 oligomerization and activation of its ligase activity. Has ubiquitin ligase activity. MALT1-dependent BCL-10 cleavage plays an important role in T-cell antigen receptor-induced integrin adhesion.,similarity:Belongs to the peptidase C14B family.,similarity:Contains 1 death domain.,similarity:Contains 2 Ig-like C2-type (immunoglobulin-like) domains.,subcellular location:Shuttles between the nucleus and cytoplasm. Found in perinuclear structures together with BCL10.,subunit:Binds through its Ig-like domains to BCL10. Forms oligomers which bind to TRAF6.,tissue specificity:Highly expressed in peripheral blood mononuclear cells. Detected at lower levels in bone marrow, thymus and lymph node, and at very low levels in colon and lung.,

Research Area

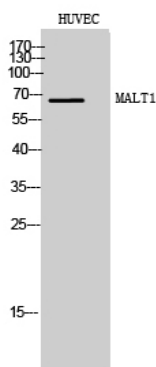
T_Cell_Receptor;B_Cell_Antigen;

Image Data

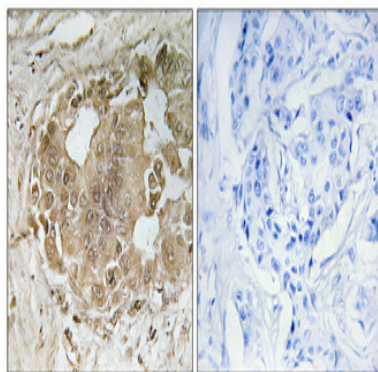


Western blot analysis of lysates from HUVEC cells, using MALT1 Antibody. The lane on the right is blocked with the synthesized peptide.

Product Name: MALT1 Rabbit Polyclonal Antibody
Catalog #: APRab13608



Western Blot analysis of HUVEC cells using MALT1 Polyclonal Antibody



Immunohistochemical analysis of paraffin-embedded Human breast cancer. Antibody was diluted at 1:100 (4°,overnight) . High-pressure and temperature Tris-EDTA,pH8.0 was used for antigen retrieval. Negative contrl (right) obtaned from antibody was pre-absorbed by immunogen peptide.

Note

For research use only.