

**Product Name: LT- $\beta$  Rabbit Polyclonal Antibody**  
**Catalog #: APRab13482**



## Summary

<b>Production Name</b>	LT- $\beta$ Rabbit Polyclonal Antibody
<b>Description</b>	Rabbit Polyclonal Antibody
<b>Host</b>	Rabbit
<b>Application</b>	WB,IHC-P,IF-P,IF-F,ICC/IF,ELISA
<b>Reactivity</b>	Human,Rat,Mouse

## Performance

<b>Conjugation</b>	Unconjugated
<b>Modification</b>	Unmodified
<b>Isotype</b>	IgG
<b>Clonality</b>	Polyclonal
<b>Form</b>	Liquid
<b>Storage</b>	Store at 4°C short term. Aliquot and store at -20°C long term. Avoid freeze/thaw cycles.
<b>Buffer</b>	Liquid in PBS containing 50% glycerol, 0.5% BSA and 0.02% New type preservative N.
<b>Purification</b>	Affinity purification

## Immunogen

<b>Gene Name</b>	LTB TNFC TNFSF3
<b>Alternative Names</b>	Lymphotoxin-beta (LT-beta;Tumor necrosis factor C;TNF-C;Tumor necrosis factor ligand superfamily member 3)
<b>Gene ID</b>	4050.0
<b>SwissProt ID</b>	Q06643.Synthetic peptide from human protein at AA range: 41-90

## Application

<b>Dilution Ratio</b>	IHC-P 1:50-200, ELISA 1:10000-20000, WB 1:500-2000, IF-P/IF-F/ICC/IF 1:50-200
<b>Molecular Weight</b>	

## Background

**Product Name: LT- $\beta$  Rabbit Polyclonal Antibody**  
**Catalog #: APRab13482**

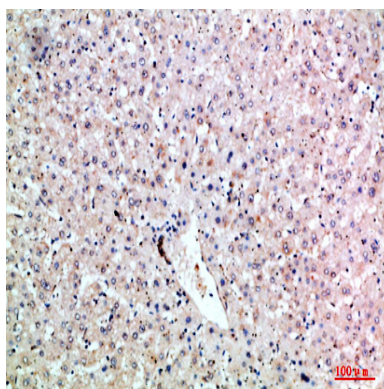


Lymphotoxin beta is a type II membrane protein of the TNF family. It anchors lymphotoxin-alpha to the cell surface through heterotrimer formation. The predominant form on the lymphocyte surface is the lymphotoxin-alpha 1/beta 2 complex (e.g. 1 molecule alpha/2 molecules beta) and this complex is the primary ligand for the lymphotoxin-beta receptor. The minor complex is lymphotoxin-alpha 2/beta 1. LTB is an inducer of the inflammatory response system and involved in normal development of lymphoid tissue. Lymphotoxin-beta isoform b is unable to complex with lymphotoxin-alpha suggesting a function for lymphotoxin-beta which is independent of lymphotoxin-alpha. Alternative splicing results in multiple transcript variants encoding different isoforms. [provided by RefSeq, Jul 2008],function:Cytokine that binds to LTBR/TNFRSF3. May play a specific role in immune response regulation. Provides the membrane anchor for the attachment of the heterotrimeric complex to the cell surface. Isoform 2 is probably non-functional.,similarity:Belongs to the tumor necrosis factor family.,subunit:Heterotrimer of either two LTB and one LTA subunits or (less prevalent) one LTB and two LTA subunits.,tissue specificity:Spleen and thymus.,

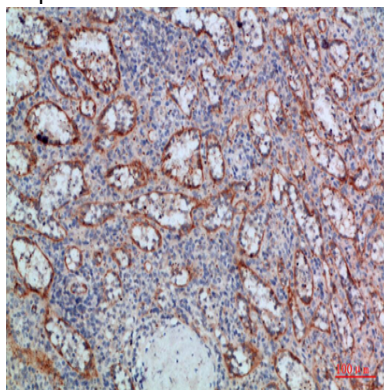
## Research Area

Cytokine-cytokine receptor interaction;

## Image Data



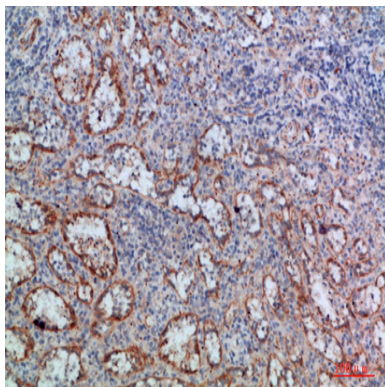
Immunohistochemical analysis of paraffin-embedded human-liver, antibody was diluted at 1:200



Immunohistochemical analysis of paraffin-embedded human-spleen, antibody was diluted at 1:200

**Product Name: LT- $\beta$  Rabbit Polyclonal Antibody**  
**Catalog #: APRab13482**

---



Immunohistochemical analysis of paraffin-embedded human-spleen, antibody was diluted at 1:200

**Note**

For research use only.