

## Summary

|                        |  |
|------------------------|--|
| <b>Production Name</b> | LT- $\beta$ Rabbit Polyclonal Antibody |
| <b>Description</b>     | Rabbit Polyclonal Antibody             |
| <b>Host</b>            | Rabbit                                 |
| <b>Application</b>     | WB,IF-P,IF-F,ICC/IF,ELISA              |
| <b>Reactivity</b>      | Human,Mouse                            |

## Performance

|                     |  |
|---------------------|--|
| <b>Conjugation</b>  | Unconjugated   |
| <b>Modification</b> | Unmodified   |
| <b>Isotype</b>      | IgG  |
| <b>Clonality</b>    | Polyclonal   |
| <b>Form</b>         | Liquid   |
| <b>Storage</b>      | Store at 4°C short term. Aliquot and store at -20°C long term. Avoid freeze/thaw cycles. |
| <b>Buffer</b>       | Liquid in PBS containing 50% glycerol, 0.5% BSA and 0.02% New type preservative N.       |
| <b>Purification</b> | Affinity purification  |

## Immunogen

|                          |   |
|--------------------------|---|
| <b>Gene Name</b>         | LTB   |
| <b>Alternative Names</b> | LTB; TNFC; TNFSF3; Lymphotoxin-beta; LT-beta; Tumor necrosis factor C; TNF-C; Tumor necrosis factor ligand superfamily member 3 |
| <b>Gene ID</b>           | 4050.0  |
| <b>SwissProt ID</b>      | Q06643.The antiserum was produced against synthesized peptide derived from human TNFC. AA range:181-230                         |

## Application

|                         |   |
|-------------------------|---|
| <b>Dilution Ratio</b>   | WB 1:500-1:2000, IF-P/IF-F/ICC/IF 1:200-1:1000, ELISA 1:10000.Not yet tested in other applications. |
| <b>Molecular Weight</b> | 22kDa   |

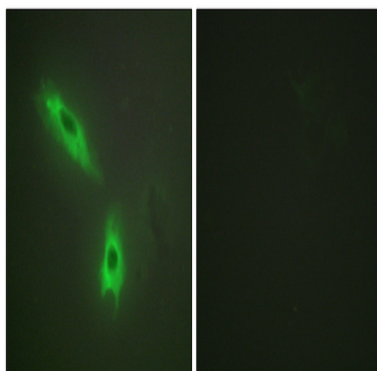
## Background

Lymphotoxin beta is a type II membrane protein of the TNF family. It anchors lymphotoxin-alpha to the cell surface through heterotrimer formation. The predominant form on the lymphocyte surface is the lymphotoxin-alpha 1/beta 2 complex (e.g. 1 molecule alpha/2 molecules beta) and this complex is the primary ligand for the lymphotoxin-beta receptor. The minor complex is lymphotoxin-alpha 2/beta 1. LTB is an inducer of the inflammatory response system and involved in normal development of lymphoid tissue. Lymphotoxin-beta isoform b is unable to complex with lymphotoxin-alpha suggesting a function for lymphotoxin-beta which is independent of lymphotoxin-alpha. Alternative splicing results in multiple transcript variants encoding different isoforms. [provided by RefSeq, Jul 2008],function:Cytokine that binds to LTBR/TNFRSF3. May play a specific role in immune response regulation. Provides the membrane anchor for the attachment of the heterotrimeric complex to the cell surface. Isoform 2 is probably non-functional.,similarity:Belongs to the tumor necrosis factor family.,subunit:Heterotrimer of either two LTB and one LTA subunits or (less prevalent) one LTB and two LTA subunits.,tissue specificity:Spleen and thymus.,

## Research Area

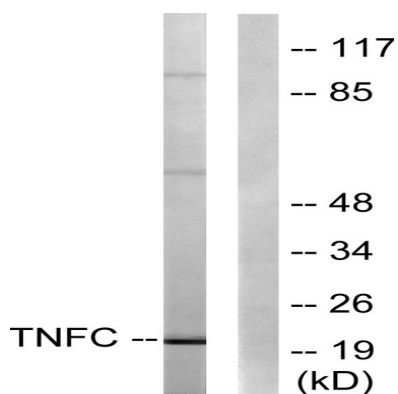
Cytokine-cytokine receptor interaction;

## Image Data



Immunofluorescence analysis of HeLa cells, using TNFC Antibody. The picture on the right is blocked with the synthesized peptide.

**Product Name: LT- $\beta$  Rabbit Polyclonal Antibody**  
**Catalog #: APRab13481**



Western blot analysis of lysates from HepG2 cells, using TNFC Antibody. The lane on the right is blocked with the synthesized peptide.



Western Blot analysis of various cells using LT- $\beta$  Polyclonal Antibody

## Note

For research use only.