

Product Name: L-type Ca++ CP γ 1 Rabbit Polyclonal Antibody
Catalog #: APRab13479

Summary

Production Name	L-type Ca++ CP γ 1 Rabbit Polyclonal Antibody
Description	Rabbit Polyclonal Antibody
Host	Rabbit
Application	WB,ELISA
Reactivity	Human,Mouse,Rat

Performance

Conjugation	Unconjugated
Modification	Unmodified
Isotype	IgG
Clonality	Polyclonal
Form	Liquid
Storage	Store at 4°C short term. Aliquot and store at -20°C long term. Avoid freeze/thaw cycles.
Buffer	Liquid in PBS containing 50% glycerol, 0.5% BSA and 0.02% New type preservative N.
Purification	Affinity purification

Immunogen

Gene Name	CACNG1
Alternative Names	CACNG1; CACNLG; Voltage-dependent calcium channel gamma-1 subunit; Dihydropyridine-sensitive L-type; skeletal muscle calcium channel subunit gamma
Gene ID	786.0
SwissProt ID	Q06432.The antiserum was produced against synthesized peptide derived from human CACNG1. AA range:137-186

Application

Dilution Ratio	WB 1:500-1:2000, ELISA 1:5000.Not yet tested in other applications.
Molecular Weight	25kDa

Product Name: L-type Ca⁺⁺ CP γ 1 Rabbit Polyclonal Antibody
Catalog #: AP Rab13479



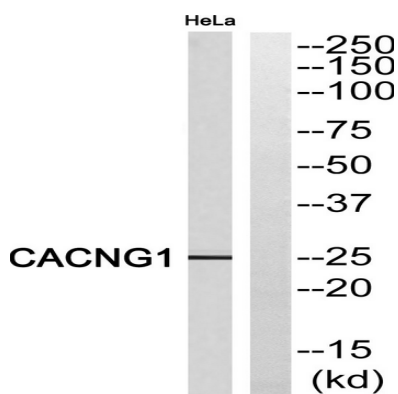
Background

calcium voltage-gated channel auxiliary subunit gamma 1(CACNG1) Homo sapiens Voltage-dependent calcium channels are composed of five subunits. The protein encoded by this gene represents one of these subunits, gamma, and is one of two known gamma subunit proteins. This particular gamma subunit is part of skeletal muscle 1,4-dihydropyridine-sensitive calcium channels and is an integral membrane protein that plays a role in excitation-contraction coupling. This gene is part of a functionally diverse eight-member protein subfamily of the PMP-22/EMP/MP20 family and is located in a cluster with two family members that function as transmembrane AMPA receptor regulatory proteins (TARPs). [provided by RefSeq, Dec 2010],function:This protein is a subunit of the dihydropyridine (DHP) sensitive calcium channel. Plays a role in excitation-contraction coupling. The skeletal muscle DHP-sensitive Ca(2+) channel may function only as a multiple subunit complex.,similarity:Belongs to the PMP-22/EMP/MP20 family. CACNG subfamily.,subunit:The L-type calcium channel is composed of five subunits: alpha-1, alpha-2/delta, beta and gamma.,tissue specificity:Skeletal muscle.,

Research Area

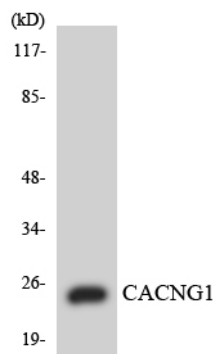
MAPK_ERK_Growth;MAPK_G_Protein;Cardiac muscle contraction;Hypertrophic cardiomyopathy (HCM);Arrhythmogenic right ventricular cardiomyopathy (ARVC);Dilated cardiomyopathy;

Image Data



Western blot analysis of CACNG1 Antibody. The lane on the right is blocked with the CACNG1 peptide.

Product Name: L-type Ca⁺⁺ CP γ 1 Rabbit Polyclonal Antibody
Catalog #: APRab13479



Western blot analysis of the lysates from COLO205 cells using CACNG1 antibody.

Note

For research use only.