

Product Name: LRRK1 Rabbit Polyclonal Antibody
Catalog #: AP Rab13443



Summary

Production Name	LRRK1 Rabbit Polyclonal Antibody
Description	Rabbit Polyclonal Antibody
Host	Rabbit
Application	IHC-P,IF-P,IF-F,ICC/IF,ELISA
Reactivity	Human,Rat,Mouse

Performance

Conjugation	Unconjugated
Modification	Unmodified
Isotype	IgG
Clonality	Polyclonal
Form	Liquid
Storage	Store at 4°C short term. Aliquot and store at -20°C long term. Avoid freeze/thaw cycles.
Buffer	Liquid in PBS containing 50% glycerol, 0.5% BSA and 0.02% New type preservative N.
Purification	Affinity purification

Immunogen

Gene Name	LRRK1
Alternative Names	LRRK1; KIAA1790; Leucine-rich repeat serine/threonine-protein kinase 1
Gene ID	79705.0
SwissProt ID	Q38SD2.The antiserum was produced against synthesized peptide derived from human LRRK1. AA range:361-410

Application

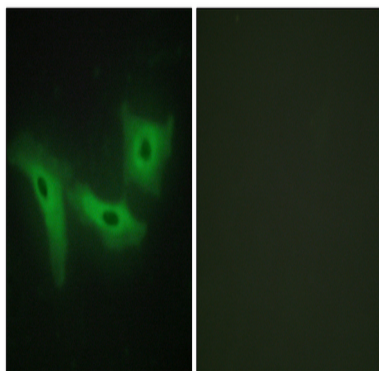
Dilution Ratio	IHC-P 1:100-1:300, IF-P/IF-F/ICC/IF 1:200-1:1000, ELISA 1:5000.Not yet tested in other applications.
Molecular Weight	

Background

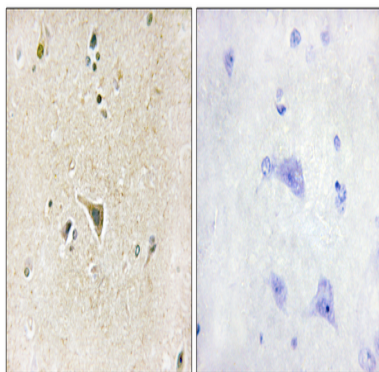
catalytic activity:ATP + a protein = ADP + a phosphoprotein.,cofactor:Magnesium or manganese.,enzyme regulation:Binding of GTP stimulates kinase activity.,PTM:Autophosphorylated.,similarity:Belongs to the protein kinase superfamily. TKL Ser/Thr protein kinase family. ROCO subfamily.,similarity:Contains 1 protein kinase domain.,similarity:Contains 1 Roc domain.,similarity:Contains 11 LRR (leucine-rich) repeats.,similarity:Contains 4 ANK repeats.,catalytic activity:ATP + a protein = ADP + a phosphoprotein.,cofactor:Magnesium or manganese.,enzyme regulation:Binding of GTP stimulates kinase activity.,PTM:Autophosphorylated.,similarity:Belongs to the protein kinase superfamily. TKL Ser/Thr protein kinase family. ROCO subfamily.,similarity:Contains 1 protein kinase domain.,similarity:Contains 1 Roc domain.,similarity:Contains 11 LRR (leucine-rich) repeats.,similarity:Contains 4 ANK repeats.,

Research Area

Image Data



Immunofluorescence analysis of HeLa cells, using LRRK1 Antibody. The picture on the right is blocked with the synthesized peptide.



Immunohistochemistry analysis of paraffin-embedded human brain tissue, using LRRK1 Antibody. The picture on the right is blocked with the synthesized peptide.

Product Name: LRRK1 Rabbit Polyclonal Antibody
Catalog #: APRab13443



Note

For research use only.