

Product Name: LRP3 Rabbit Polyclonal Antibody
Catalog #: AP Rab13432



Summary

Production Name	LRP3 Rabbit Polyclonal Antibody
Description	Rabbit Polyclonal Antibody
Host	Rabbit
Application	WB,IHC-P
Reactivity	Human,Mouse,Rat

Performance

Conjugation	Unconjugated
Modification	Unmodified
Isotype	IgG
Clonality	Polyclonal
Form	Liquid
Storage	Store at 4°C short term. Aliquot and store at -20°C long term. Avoid freeze/thaw cycles.
Buffer	Liquid in PBS containing 50% glycerol, 0.5% BSA and 0.02% New type preservative N.
Purification	Affinity purification

Immunogen

Gene Name	LRP3
Alternative Names	LRP3; Low-density lipoprotein receptor-related protein 3; LRP-3; 105 kDa low-density lipoprotein receptor-related protein; hLRp105
Gene ID	4037.0
SwissProt ID	O75074. The antiserum was produced against synthesized peptide derived from human LRP3. AA range:17-66

Application

Dilution Ratio	WB 1:500-2000, IHC-P 1:50-300
Molecular Weight	80kDa

Background

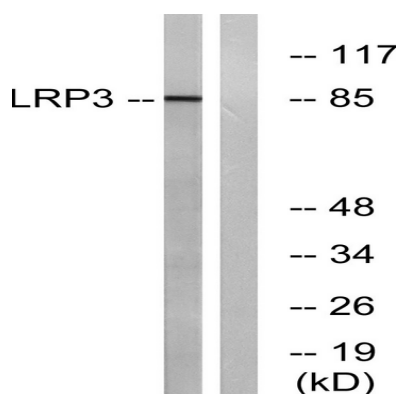
Product Name: LRP3 Rabbit Polyclonal Antibody
Catalog #: APRab13432



function: Probable receptor, which may be involved in the internalization of lipophilic molecules and/or signal transduction. Its precise role is however unclear, since it does not bind to very low density lipoprotein (VLDL) or to LRPAP1 in vitro., similarity: Belongs to the LDLR family., similarity: Contains 2 CUB domains., similarity: Contains 4 LDL-receptor class A domains., subunit: Binds GGA1 and GGA2., tissue specificity: Widely expressed. Highly expressed in skeletal muscle and ovary. Expressed at intermediate level in heart, brain, liver, pancreas, prostate and small intestine. Weakly expressed in testis, colon and leukocyte., function: Probable receptor, which may be involved in the internalization of lipophilic molecules and/or signal transduction. Its precise role is however unclear, since it does not bind to very low density lipoprotein (VLDL) or to LRPAP1 in vitro., similarity: Belongs to the LDLR family., similarity: Contains 2 CUB domains., similarity: Contains 4 LDL-receptor class A domains., subunit: Binds GGA1 and GGA2., tissue specificity: Widely expressed. Highly expressed in skeletal muscle and ovary. Expressed at intermediate level in heart, brain, liver, pancreas, prostate and small intestine. Weakly expressed in testis, colon and leukocyte.,

Research Area

Image Data



Western blot analysis of lysates from RAW264.7 cells, using LRP3 Antibody. The lane on the right is blocked with the synthesized peptide.

Note

For research use only.