

**Product Name: LOST1 Rabbit Polyclonal Antibody**  
**Catalog #: AP Rab13373**



## Summary

<b>Production Name</b>	LOST1 Rabbit Polyclonal Antibody
<b>Description</b>	Rabbit Polyclonal Antibody
<b>Host</b>	Rabbit
<b>Application</b>	WB,ELISA,IHC-P
<b>Reactivity</b>	Human,Rat,Mouse

## Performance

<b>Conjugation</b>	Unconjugated
<b>Modification</b>	Unmodified
<b>Isotype</b>	IgG
<b>Clonality</b>	Polyclonal
<b>Form</b>	Liquid
<b>Storage</b>	Store at 4°C short term. Aliquot and store at -20°C long term. Avoid freeze/thaw cycles.
<b>Buffer</b>	Liquid in PBS containing 50% glycerol, 0.5% BSA and 0.02% New type preservative N.
<b>Purification</b>	Affinity purification

## Immunogen

<b>Gene Name</b>	TUSC5 TUSC5; IFITMD3; LOST1; Tumor suppressor candidate 5; Dispanin subfamily B member
<b>Alternative Names</b>	1; DSPB1; Interferon-induced transmembrane domain-containing protein D3; Protein located at seventeen-p-thirteen point three 1
<b>Gene ID</b>	286753.0
<b>SwissProt ID</b>	Q8IXB3.The antiserum was produced against synthesized peptide derived from human TUSC5. AA range:1-50

## Application

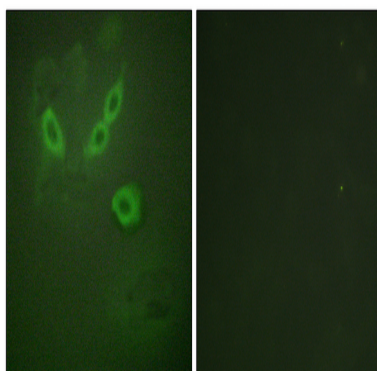
<b>Dilution Ratio</b>	WB 1:500-2000, IHC-P 1:50-300, ELISA 2000-20000
<b>Molecular Weight</b>	22kDa

## Background

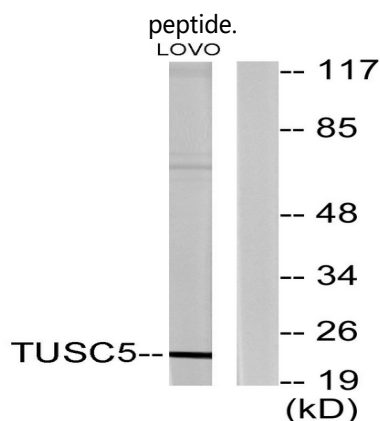
developmental stage:Expressed in fetal brain.,function:May be involved in fat metabolism.,similarity:Belongs to the CD225 family.,tissue specificity:Expressed at high levels in heart, mammary gland, adrenal gland, stomach, smooth muscle and skeletal muscle, and at lower levels in brain and lung. Strongly down-regulated in lung cancer tissues, due to hypermethylation of the corresponding locus.,developmental stage:Expressed in fetal brain.,function:May be involved in fat metabolism.,similarity:Belongs to the CD225 family.,tissue specificity:Expressed at high levels in heart, mammary gland, adrenal gland, stomach, smooth muscle and skeletal muscle, and at lower levels in brain and lung. Strongly down-regulated in lung cancer tissues, due to hypermethylation of the corresponding locus.,

## Research Area

## Image Data



Immunofluorescence analysis of HeLa cells, using TUSC5 Antibody. The picture on the right is blocked with the synthesized



Western blot analysis of lysates from LOVO cells, using TUSC5 Antibody. The lane on the right is blocked with the synthesized peptide.

**Product Name: LOST1 Rabbit Polyclonal Antibody**  
**Catalog #: APRab13373**

---



**Note**

For research use only.