

Product Name: LOK Rabbit Polyclonal Antibody
Catalog #: APRab13368



Summary

Production Name	LOK Rabbit Polyclonal Antibody
Description	Rabbit Polyclonal Antibody
Host	Rabbit
Application	WB,ELISA,IHC-P
Reactivity	Human,Rat,Mouse

Performance

Conjugation	Unconjugated
Modification	Unmodified
Isotype	IgG
Clonality	Polyclonal
Form	Liquid
Storage	Store at 4°C short term. Aliquot and store at -20°C long term. Avoid freeze/thaw cycles.
Buffer	Liquid in PBS containing 50% glycerol, 0.5% BSA and 0.02% New type preservative N.
Purification	Affinity purification

Immunogen

Gene Name	STK10
Alternative Names	STK10; LOK; Serine/threonine-protein kinase 10; Lymphocyte-oriented kinase
Gene ID	6793.0
SwissProt ID	O94804.The antiserum was produced against synthesized peptide derived from human STK10. AA range:491-540

Application

Dilution Ratio	WB 1:500-2000, IHC-P 1:50-300, ELISA 2000-20000
Molecular Weight	120kDa

Background

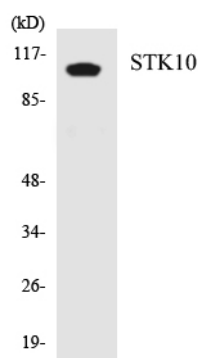
Product Name: LOK Rabbit Polyclonal Antibody
Catalog #: APRab13368



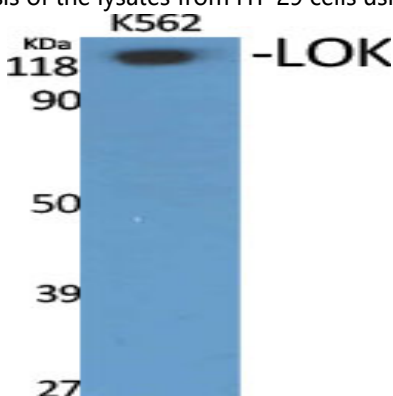
This gene encodes a member of the Ste20 family of serine/threonine protein kinases, and is similar to several known polo-like kinase kinases. The protein can associate with and phosphorylate polo-like kinase 1, and overexpression of a kinase-dead version of the protein interferes with normal cell cycle progression. The kinase can also negatively regulate interleukin 2 expression in T-cells via the mitogen activated protein kinase kinase 1 pathway. [provided by RefSeq, Jul 2008], catalytic activity: ATP + a protein = ADP + a phosphoprotein., function: Can act on substrates such as myelin basic protein and histone 2A on serine and threonine residues., PTM: Autophosphorylated., similarity: Belongs to the protein kinase superfamily., similarity: Belongs to the protein kinase superfamily. STE Ser/Thr protein kinase family. STE20 subfamily., similarity: Contains 1 protein kinase domain., tissue specificity: Expressed predominantly in lymphoid organs.,

Research Area

Image Data

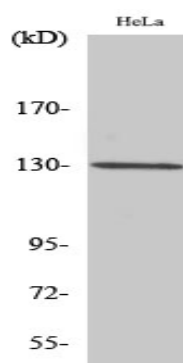


Western blot analysis of the lysates from HT-29 cells using STK10 antibody.



Western Blot analysis of various cells using LOK Polyclonal Antibody

Product Name: LOK Rabbit Polyclonal Antibody
Catalog #: APRab13368



Western Blot analysis of HuvEc cells using LOK Polyclonal Antibody

Note

For research use only.