

Product Name: LMTK3 Rabbit Polyclonal Antibody
Catalog #: APRab13363



Summary

Production Name	LMTK3 Rabbit Polyclonal Antibody
Description	Rabbit Polyclonal Antibody
Host	Rabbit
Application	WB,IHC-P,IF-P,IF-F,ICC/IF,ELISA
Reactivity	Human,Mouse

Performance

Conjugation	Unconjugated
Modification	Unmodified
Isotype	IgG
Clonality	Polyclonal
Form	Liquid
Storage	Store at 4°C short term. Aliquot and store at -20°C long term. Avoid freeze/thaw cycles.
Buffer	Liquid in PBS containing 50% glycerol, 0.5% BSA and 0.02% New type preservative N.
Purification	Affinity purification

Immunogen

Gene Name	LMTK3
Alternative Names	LMTK3; KIAA1883; TYKLM3; Serine/threonine-protein kinase LMTK3; Lemur tyrosine kinase 3
Gene ID	114783.0
SwissProt ID	Q96Q04.The antiserum was produced against synthesized peptide derived from human LMTK3. AA range:1251-1300

Application

Dilution Ratio	WB 1:500-1:2000, IHC-P 1:100-1:300, ELISA 1:20000, IF-P/IF-F/ICC/IF 1:50-200
Molecular Weight	40kDa

Product Name: LMTK3 Rabbit Polyclonal Antibody
Catalog #: APRab13363

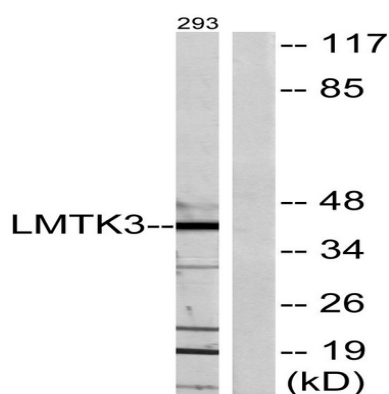


Background

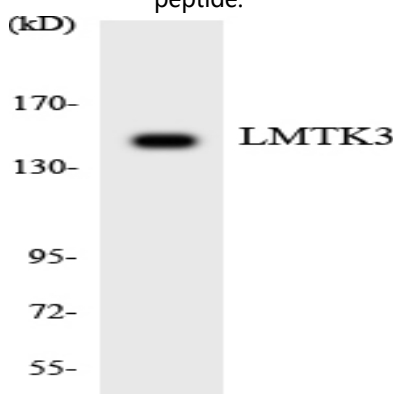
catalytic activity:ATP + a protein = ADP + a phosphoprotein.,similarity:Belongs to the protein kinase superfamily. Tyr protein kinase family.,similarity:Contains 1 protein kinase domain.,catalytic activity:ATP + a protein = ADP + a phosphoprotein.,similarity:Belongs to the protein kinase superfamily. Tyr protein kinase family.,similarity:Contains 1 protein kinase domain.,

Research Area

Image Data

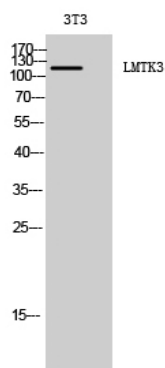


Western blot analysis of lysates from 293 cells, using LMTK3 Antibody. The lane on the right is blocked with the synthesized peptide.



Western blot analysis of the lysates from HeLa cells using LMTK3 antibody.

Product Name: LMTK3 Rabbit Polyclonal Antibody
Catalog #: APRab13363



Western Blot analysis of 3T3 cells using LMTK3 Polyclonal Antibody diluted at 1: 2000

Note

For research use only.