

**Product Name: LMO3 Rabbit Polyclonal Antibody**  
**Catalog #: APRab13357**



## Summary

<b>Production Name</b>	LMO3 Rabbit Polyclonal Antibody
<b>Description</b>	Rabbit Polyclonal Antibody
<b>Host</b>	Rabbit
<b>Application</b>	WB,IHC-P,IF-P,IF-F,ICC/IF,ELISA
<b>Reactivity</b>	Human,Mouse,Rat,Monkey

## Performance

<b>Conjugation</b>	Unconjugated
<b>Modification</b>	Unmodified
<b>Isotype</b>	IgG
<b>Clonality</b>	Polyclonal
<b>Form</b>	Liquid
<b>Storage</b>	Store at 4°C short term. Aliquot and store at -20°C long term. Avoid freeze/thaw cycles.
<b>Buffer</b>	Liquid in PBS containing 50% glycerol, 0.5% BSA and 0.02% New type preservative N.
<b>Purification</b>	Affinity purification

## Immunogen

<b>Gene Name</b>	LMO3
<b>Alternative Names</b>	LMO3; RBTN3; RBTNL2; RHOM3; LIM domain only protein 3; LMO-3; Neuronal-specific transcription factor DAT1; Rhombotin-3
<b>Gene ID</b>	55885.0
<b>SwissProt ID</b>	Q8TAP4.The antiserum was produced against synthesized peptide derived from human LMO3. AA range:96-145

## Application

<b>Dilution Ratio</b>	WB 1:500-1:2000, IHC-P 1:100-1:300, ELISA 1:10000, IF-P/IF-F/ICC/IF 1:50-200
<b>Molecular Weight</b>	17kDa

**Product Name: LMO3 Rabbit Polyclonal Antibody**  
**Catalog #: AP Rab13357**

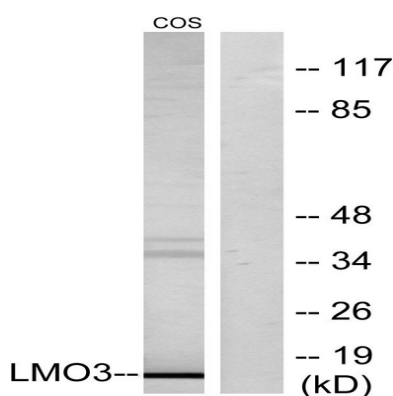


## Background

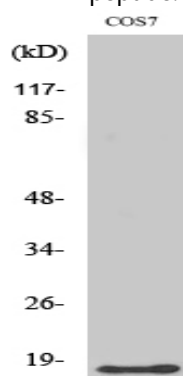
LIM domain only 3(LMO3) Homo sapiens The protein encoded by this gene belongs to the rhombotin family of cysteine-rich LIM domain oncogenes. This gene is predominantly expressed in the brain. Related family members, LMO1 and LMO2 on chromosome 11, have been reported to be involved in chromosomal translocations in T-cell leukemia. Many alternatively spliced transcript variants have been found for this gene. [provided by RefSeq, Aug 2011], similarity: Contains 2 LIM zinc-binding domains,

## Research Area

## Image Data



Western blot analysis of lysates from COS7 cells, using LMO3 Antibody. The lane on the right is blocked with the synthesized peptide.



Western Blot analysis of various cells using LMO3 Polyclonal Antibody

## Note

For research use only.