

Summary

Production Name	LHR Rabbit Polyclonal Antibody
Description	Rabbit Polyclonal Antibody
Host	Rabbit
Application	WB,ELISA,IHC-P
Reactivity	Human,Mouse,Rat

Performance

Conjugation	Unconjugated
Modification	Unmodified
Isotype	IgG
Clonality	Polyclonal
Form	Liquid
Storage	Store at 4°C short term. Aliquot and store at -20°C long term. Avoid freeze/thaw cycles.
Buffer	Liquid in PBS containing 50% glycerol, 0.5% BSA and 0.02% New type preservative N.
Purification	Affinity purification

Immunogen

Gene Name	LHCGR
Alternative Names	LHCGR; LCGR; LGR2; LHRHR; Lutropin-choriogonadotropic hormone receptor; LH/CG-R; Luteinizing hormone receptor; LHR; LSH-R
Gene ID	3973.0
SwissProt ID	P22888.The antiserum was produced against synthesized peptide derived from human LSHR. AA range:621-670

Application

Dilution Ratio	WB 1:500-2000, IHC-P 1:50-300, ELISA 2000-20000
Molecular Weight	80kDa

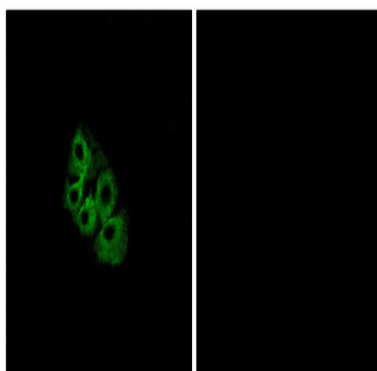
Background

This gene encodes the receptor for both luteinizing hormone and choriogonadotropin. This receptor belongs to the G-protein coupled receptor 1 family, and its activity is mediated by G proteins which activate adenylate cyclase. Mutations in this gene result in disorders of male secondary sexual character development, including familial male precocious puberty, also known as testotoxicosis, hypogonadotropic hypogonadism, Leydig cell adenoma with precocious puberty, and male pseudohermaphroditism with Leydig cell hypoplasia. [provided by RefSeq, Jul 2008], alternative products: Additional isoforms seem to exist, disease: Defects in LHCGR are a cause of familial male precocious puberty (FMPP) [MIM:176410]; also known as testotoxicosis. In FMPP the receptor is constitutively activated., disease: Defects in LHCGR are a cause of Leydig cell hypoplasia (LCH) [MIM:152790]. LCH is an autosomal recessive disease characterized by male pseudohermaphroditism. In LCH the testes are small with marked immaturity of the Leydig cells which correlates with undetectable plasma testosterone levels and elevated gonadotropins., function: Receptor for lutropin-choriogonadotropic hormone. The activity of this receptor is mediated by G proteins which activate adenylate cyclase., online information: Glycoprotein-hormone Receptors Information System, similarity: Belongs to the G-protein coupled receptor 1 family., similarity: Belongs to the G-protein coupled receptor 1 family. FSH/LSH/TSH subfamily., similarity: Contains 7 LRR (leucine-rich) repeats., tissue specificity: Gonadal and thyroid cells.,

Research Area

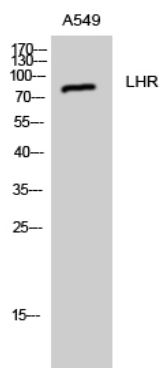
Calcium; Neuroactive ligand-receptor interaction;

Image Data



Immunofluorescence analysis of A549 cells, using LSHR Antibody. The picture on the right is blocked with the synthesized peptide.

Product Name: LHR Rabbit Polyclonal Antibody
Catalog #: APRab13295



Western Blot analysis of A549 cells using LHR Polyclonal Antibody

Note

For research use only.