

Product Name: LASP-1 Rabbit Polyclonal Antibody
Catalog #: APRab13220



Summary

Production Name	LASP-1 Rabbit Polyclonal Antibody
Description	Rabbit Polyclonal Antibody
Host	Rabbit
Application	WB,IHC-P
Reactivity	Human,Mouse,Rat

Performance

Conjugation	Unconjugated
Modification	Unmodified
Isotype	IgG
Clonality	Polyclonal
Form	Liquid
Storage	Store at 4°C short term. Aliquot and store at -20°C long term. Avoid freeze/thaw cycles.
Buffer	Liquid in PBS containing 50% glycerol, 0.5% BSA and 0.02% New type preservative N.
Purification	Affinity purification

Immunogen

Gene Name	LASP1
Alternative Names	LASP1; MLN50; LIM and SH3 domain protein 1; LASP-1; Metastatic lymph node gene 50 protein; MLN 50
Gene ID	3927.0
SwissProt ID	Q14847. The antiserum was produced against synthesized peptide derived from the Internal region of human LASP1. AA range:51-100

Application

Dilution Ratio	WB 1:500-2000, IHC-P 1:50-300
Molecular Weight	28kDa

Background

Product Name: LASP-1 Rabbit Polyclonal Antibody
Catalog #: APRab13220

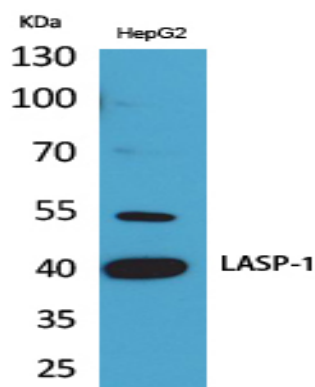


This gene encodes a member of a subfamily of LIM proteins, characterized by a LIM motif and a domain of Src homology region 3, and also a member of the nebulin family of actin-binding proteins. The encoded protein is a cAMP and cGMP dependent signaling protein and binds to the actin cytoskeleton at extensions of the cell membrane. The encoded protein has been linked to metastatic breast cancer, hematopoietic tumors such as B-cell lymphomas, and colorectal cancer.

[provided by RefSeq, Oct 2012],function:Plays an important role in the regulation of dynamic actin-based, cytoskeletal activities. Agonist-dependent changes in LASP1 phosphorylation may also serve to regulate actin-associated ion transport activities, not only in the parietal cell but also in certain other F-actin-rich secretory epithelial cell types.,PTM:Phosphorylated.,similarity:Contains 1 LIM zinc-binding domain.,similarity:Contains 1 SH3 domain.,similarity:Contains 2 nebulin repeats.,subcellular location:Associated with the F-actin rich cortical cytoskeleton.,subunit:Interacts with F-actin.,

Research Area

Image Data



Western Blot analysis of HepG2 cells using LASP-1 Polyclonal Antibody. Antibody was diluted at 1:500. Secondary antibody was diluted at 1:20000

Note

For research use only.