

## Summary

<b>Production Name</b>	LARG Rabbit Polyclonal Antibody
<b>Description</b>	Rabbit Polyclonal Antibody
<b>Host</b>	Rabbit
<b>Application</b>	WB,IHC-P
<b>Reactivity</b>	Human,Mouse,Rat

## Performance

<b>Conjugation</b>	Unconjugated
<b>Modification</b>	Unmodified
<b>Isotype</b>	IgG
<b>Clonality</b>	Polyclonal
<b>Form</b>	Liquid
<b>Storage</b>	Store at 4°C short term. Aliquot and store at -20°C long term. Avoid freeze/thaw cycles.
<b>Buffer</b>	Liquid in PBS containing 50% glycerol, 0.5% BSA and 0.02% New type preservative N.
<b>Purification</b>	Affinity purification

## Immunogen

<b>Gene Name</b>	ARHGEF12
<b>Alternative Names</b>	ARHGEF12; KIAA0382; LARG; Rho guanine nucleotide exchange factor 12; Leukemia-associated RhoGEF
<b>Gene ID</b>	23365.0
<b>SwissProt ID</b>	Q9NZN5.The antiserum was produced against synthesized peptide derived from human ARHGEF12. AA range:449-498

## Application

<b>Dilution Ratio</b>	WB 1:500-2000, IHC-P 1:50-300
<b>Molecular Weight</b>	173kDa

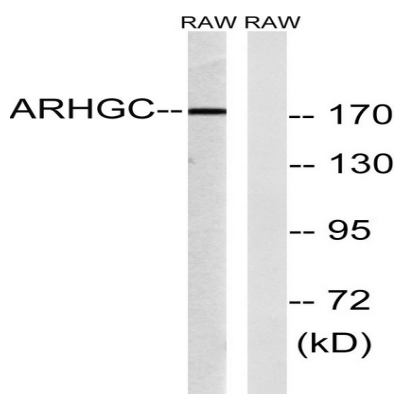
## Background

Rho GTPases play a fundamental role in numerous cellular processes that are initiated by extracellular stimuli working through G protein-coupled receptors. The encoded protein may form a complex with G proteins and stimulate Rho-dependent signals. This protein has been observed to form a myeloid/lymphoid fusion partner in acute myeloid leukemia. Three transcript variants encoding different isoforms have been found for this gene. [provided by RefSeq, Jul 2014], disease: A chromosomal aberration involving ARHGEF12 may be a cause of acute leukemia. Translocation t(11;11)(q23;23) with MLL, function: May play a role in the regulation of RhoA GTPase by guanine nucleotide-binding alpha-12 (GNA12) and alpha-13 (GNA13). Acts as guanine nucleotide exchange factor (GEF) for RhoA GTPase and may act as GTPase-activating protein (GAP) for GNA12 and GNA13, PTM: Phosphorylated upon DNA damage, probably by ATM or ATR, sequence caution: Contaminating sequence. Potential poly-A sequence, similarity: Contains 1 DH (DBL-homology) domain, similarity: Contains 1 PDZ (DHR) domain, similarity: Contains 1 PH domain, similarity: Contains 1 RGSL (RGS-like) domain, subcellular location: Translocated to the membrane upon stimulation, subunit: Interacts with GNA12 and GNA13, probably through the RGS-like domain. Interacts with RHOA, PLXNB1 and PLXNB2. Interacts through its PDZ domain with IGF1R beta subunit, tissue specificity: Ubiquitously expressed. Isoform 2 is found in jejunum and testis,

## Research Area

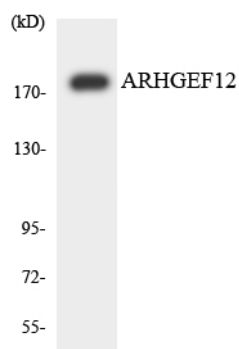
Regulation of Actin Dynamics; AMPK

## Image Data

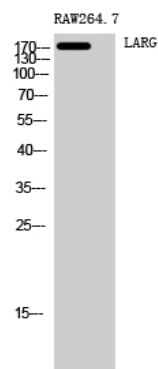


Western blot analysis of lysates from RAW264.7 cells, using ARHGEF12 Antibody. The lane on the right is blocked with the synthesized peptide.

**Product Name: LARG Rabbit Polyclonal Antibody**  
**Catalog #: APRab13217**



Western blot analysis of the lysates from HUVEC cells using ARHGEF12 antibody.



Western Blot analysis of RAW264.7 cells using LARG Polyclonal Antibody

## **Note**

For research use only.