

Product Name: Laminin-R Rabbit Polyclonal Antibody
Catalog #: AP Rab13206



Summary

Production Name	Laminin-R Rabbit Polyclonal Antibody
Description	Rabbit Polyclonal Antibody
Host	Rabbit
Application	WB,IHC-P,IF-P,IF-F,ICC/IF,ELISA
Reactivity	Human,Mouse,Rat

Performance

Conjugation	Unconjugated
Modification	Unmodified
Isotype	IgG
Clonality	Polyclonal
Form	Liquid
Storage	Store at 4°C short term. Aliquot and store at -20°C long term. Avoid freeze/thaw cycles.
Buffer	Liquid in PBS containing 50% glycerol, 0.5% BSA and 0.02% New type preservative N.
Purification	Affinity purification

Immunogen

Gene Name	RPSA RPSA; LAMBR; LAMR1; 40S ribosomal protein SA; 37 kDa laminin receptor precursor;
Alternative Names	37LRP; 37/67 kDa laminin receptor; LRP/LR; 67 kDa laminin receptor; 67LR; Colon carcinoma laminin-binding protein; Laminin receptor 1; LamR; Laminin-binding pr
Gene ID	3921.0
SwissProt ID	P08865.The antiserum was produced against synthesized peptide derived from human Laminin-R. AA range:166-215

Application

Dilution Ratio	WB 1:500-1:2000, IHC-P 1:100-1:300, ELISA 1:40000, IF-P/IF-F/ICC/IF 1:50-200
Molecular Weight	43kDa

Background

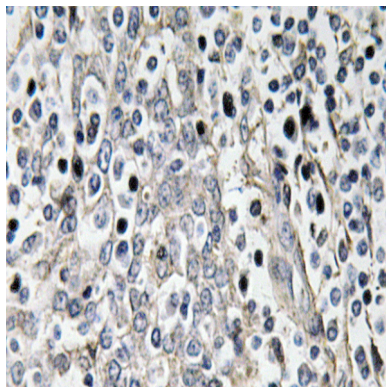
Laminins, a family of extracellular matrix glycoproteins, are the major noncollagenous constituent of basement membranes. They have been implicated in a wide variety of biological processes including cell adhesion, differentiation, migration, signaling, neurite outgrowth and metastasis. Many of the effects of laminin are mediated through interactions with cell surface receptors. These receptors include members of the integrin family, as well as non-integrin laminin-binding proteins. This gene encodes a high-affinity, non-integrin family, laminin receptor 1. This receptor has been variously called 67 kD laminin receptor, 37 kD laminin receptor precursor (37LRP) and p40 ribosome-associated protein. The amino acid sequence of laminin receptor 1 is highly conserved through evolution, suggesting a key biological function. It has been observed that the level of the laminin receptor transcript is higher in function: Required for the assembly and/or stability of the 40S ribosomal subunit. Required for the processing of the 20S rRNA-precursor to mature 18S rRNA in a late step of the maturation of 40S ribosomal subunits. Also functions as a cell surface receptor for laminin. Plays a role in cell adhesion to the basement membrane and in the consequent activation of signaling transduction pathways. May play a role in cell fate determination and tissue morphogenesis. Also acts as a receptor for several other ligands, including the pathogenic prion protein, viruses, and bacteria., miscellaneous: It is thought that in vertebrates 37/67 kDa laminin receptor acquired a dual function during evolution. It developed from the ribosomal protein SA, playing an essential role in the protein biosynthesis lacking any laminin binding activity, to a cell surface receptor with laminin binding activity., miscellaneous: This protein appears to have acquired a second function as a laminin receptor specifically in the vertebrate lineage., PTM: Acylated. Acylation may be a prerequisite for conversion of the monomeric 37 kDa laminin receptor precursor (37LRP) to the mature dimeric 67 kDa laminin receptor (67LR), and may provide a mechanism for membrane association., PTM: Cleaved by stromelysin-3 (ST3) at the cell surface. Cleavage by stromelysin-3 may be a mechanism to alter cell-extracellular matrix interactions., similarity: Belongs to the ribosomal protein S2P family., subcellular location: 67LR is found at the surface of the plasma membrane, with its C-terminal laminin-binding domain accessible to extracellular ligands. 37LRP is found at the cell surface, in the cytoplasm and in the nucleus., subunit: Monomer (37LRP) and homodimer (67LR). Component of the small ribosomal subunit. Mature ribosomes consist of a small (40S) and a large (60S) subunit. The 40S subunit contains about 33 different proteins and 1 molecule of RNA (18S). The 60S subunit contains about 49 different proteins and 3 molecules of RNA (28S, 5.8S and 5S). Interacts with RPS21. Interacts with several laminins including at least LAMB1. Interacts with MDK (By similarity). Interacts with PRNP.,

Research Area

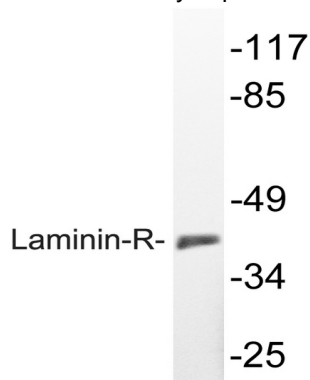
Ribosome;

Image Data

Product Name: Laminin-R Rabbit Polyclonal Antibody
Catalog #: APRab13206



Immunohistochemistry analysis of Laminin-R antibody in paraffin-embedded human tonsil tissue.



Western blot analysis of lysate from K562 cells, using Laminin-R antibody.

Note

For research use only.