

Summary

Production Name	Ksr2 Rabbit Polyclonal Antibody
Description	Rabbit Polyclonal Antibody
Host	Rabbit
Application	WB,IHC-P,IF-P,IF-F,ICC/IF,ELISA
Reactivity	Human,Mouse

Performance

Conjugation	Unconjugated
Modification	Unmodified
Isotype	IgG
Clonality	Polyclonal
Form	Liquid
Storage	Store at 4°C short term. Aliquot and store at -20°C long term. Avoid freeze/thaw cycles.
Buffer	Liquid in PBS containing 50% glycerol, 0.5% BSA and 0.02% New type preservative N.
Purification	Affinity purification

Immunogen

Gene Name	KSR2
Alternative Names	KSR2; Kinase suppressor of Ras 2; hKSR2
Gene ID	283455.0
SwissProt ID	Q6VAB6.The antiserum was produced against synthesized peptide derived from human KSR2. AA range:671-720

Application

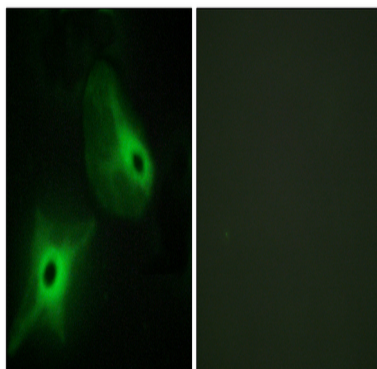
Dilution Ratio	WB 1:500-1:2000, IHC-P 1:100-1:300, IF-P/IF-F/ICC/IF 1:200-1:1000, ELISA 1:40000.Not yet tested in other applications.
Molecular Weight	108kDa

Background

domain: The protein kinase domain is predicted to be catalytically inactive., function: Location-regulated scaffold connecting MEK to RAF. Blocks MAP3K8 kinase activity and MAP3K8-mediated signaling. Acts as a negative regulator of MAP3K3-mediated activation of ERK, JNK and NF-kappa-B pathways, inhibiting MAP3K3-mediated interleukin-8 production., PTM: Phosphorylated on Ser-474 by MARK3., similarity: Belongs to the protein kinase superfamily. TKL Ser/Thr protein kinase family., similarity: Contains 1 phorbol-ester/DAG-type zinc finger., similarity: Contains 1 protein kinase domain., subunit: Interacts with MAP2K1, MAP3K8, MAPK, RAS and RAF., tissue specificity: Mainly expressed in brain and kidney., domain: The protein kinase domain is predicted to be catalytically inactive., function: Location-regulated scaffold connecting MEK to RAF. Blocks MAP3K8 kinase activity and MAP3K8-mediated signaling. Acts as a negative regulator of MAP3K3-mediated activation of ERK, JNK and NF-kappa-B pathways, inhibiting MAP3K3-mediated interleukin-8 production., PTM: Phosphorylated on Ser-474 by MARK3., similarity: Belongs to the protein kinase superfamily. TKL Ser/Thr protein kinase family., similarity: Contains 1 phorbol-ester/DAG-type zinc finger., similarity: Contains 1 protein kinase domain., subunit: Interacts with MAP2K1, MAP3K8, MAPK, RAS and RAF., tissue specificity: Mainly expressed in brain and kidney.,

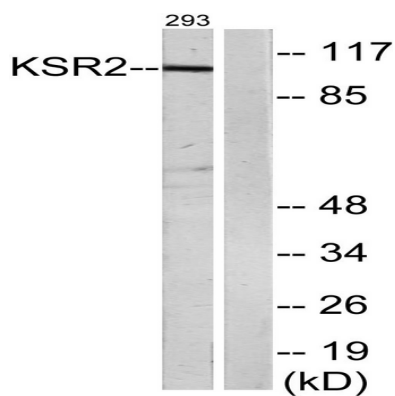
Research Area

Image Data



Immunofluorescence analysis of HeLa cells, using KSR2 Antibody. The picture on the right is blocked with the synthesized peptide.

Product Name: Ksr2 Rabbit Polyclonal Antibody
Catalog #: APRab13146



Western blot analysis of lysates from 293 cells, using KSR2 Antibody. The lane on the right is blocked with the synthesized peptide.

Note

For research use only.