

**Product Name: KG19 Rabbit Polyclonal Antibody**  
**Catalog #: APRab12986**



## Summary

<b>Production Name</b>	KG19 Rabbit Polyclonal Antibody
<b>Description</b>	Rabbit Polyclonal Antibody
<b>Host</b>	Rabbit
<b>Application</b>	WB,IHC-P,IF-P,IF-F,ICC/IF,ELISA
<b>Reactivity</b>	Human,Mouse

## Performance

<b>Conjugation</b>	Unconjugated
<b>Modification</b>	Unmodified
<b>Isotype</b>	IgG
<b>Clonality</b>	Polyclonal
<b>Form</b>	Liquid
<b>Storage</b>	Store at 4°C short term. Aliquot and store at -20°C long term. Avoid freeze/thaw cycles.
<b>Buffer</b>	Liquid in PBS containing 50% glycerol, 0.5% BSA and 0.02% New type preservative N.
<b>Purification</b>	Affinity purification

## Immunogen

<b>Gene Name</b>	BRI3BP
<b>Alternative Names</b>	BRI3BP; KG19; BRI3-binding protein; I3-binding protein; Cervical cancer 1 proto-oncogene-binding protein KG19; HCCRBP-1
<b>Gene ID</b>	140707.0
<b>SwissProt ID</b>	Q8WY22.The antiserum was produced against synthesized peptide derived from human BRI3B. AA range:1-50

## Application

<b>Dilution Ratio</b>	WB 1:500-1:2000, IHC-P 1:100-1:300, IF-P/IF-F/ICC/IF 1:200-1:1000, ELISA 1:20000.Not yet tested in other applications.
<b>Molecular Weight</b>	27kDa

**Product Name: KG19 Rabbit Polyclonal Antibody**  
**Catalog #: APRab12986**

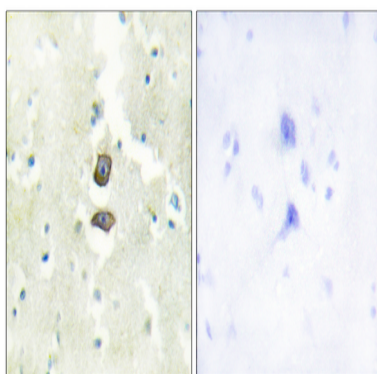


## Background

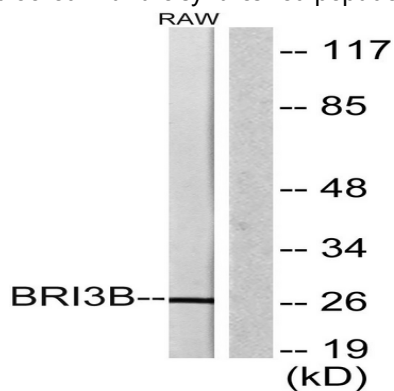
tissue specificity: Most abundantly expressed in brain, liver and kidney., tissue specificity: Most abundantly expressed in brain, liver and kidney.,

## Research Area

## Image Data



Immunohistochemistry analysis of paraffin-embedded human brain tissue, using BRI3B Antibody. The picture on the right is blocked with the synthesized peptide.



Western blot analysis of lysates from RAW264.7 cells, using BRI3B Antibody. The lane on the right is blocked with the synthesized peptide.

## Note

For research use only.