

**Product Name: Keratin 37/38 Rabbit Polyclonal Antibody**  
**Catalog #: APRab12980**

---

## Summary

<b>Production Name</b>	Keratin 37/38 Rabbit Polyclonal Antibody
<b>Description</b>	Rabbit Polyclonal Antibody
<b>Host</b>	Rabbit
<b>Application</b>	WB,ELISA,IHC-P
<b>Reactivity</b>	Human,Rat,Mouse

## Performance

<b>Conjugation</b>	Unconjugated
<b>Modification</b>	Unmodified
<b>Isotype</b>	IgG
<b>Clonality</b>	Polyclonal
<b>Form</b>	Liquid
<b>Storage</b>	Store at 4°C short term. Aliquot and store at -20°C long term. Avoid freeze/thaw cycles.
<b>Buffer</b>	Liquid in PBS containing 50% glycerol, 0.5% BSA and 0.02% New type preservative N.
<b>Purification</b>	Affinity purification

## Immunogen

<b>Gene Name</b>	KRT37/KRT38 KRT37; HHA7; HKA7; KRTHA7; Keratin; type I cuticular Ha7; Hair keratin, type I Ha7;
<b>Alternative Names</b>	Keratin-37; K37; KRT38; HHA8; HKA8; KRTHA8; Keratin, type I cuticular Ha8; Hair keratin, type I Ha8; Keratin-38; K38
<b>Gene ID</b>	8688.0
<b>SwissProt ID</b>	O76014/O76015.The antiserum was produced against synthesized peptide derived from human KRT37/38. AA range:201-250

## Application

<b>Dilution Ratio</b>	WB 1:500-2000, IHC-P 1:50-300, ELISA 2000-20000
<b>Molecular Weight</b>	50kDa

---

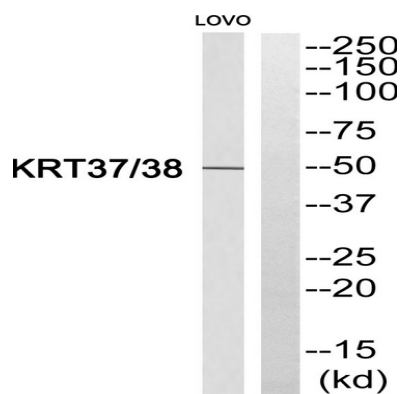
**Product Name: Keratin 37/38 Rabbit Polyclonal Antibody**  
**Catalog #: AP Rab12980**

## Background

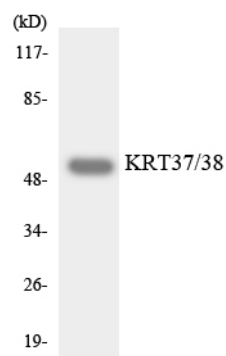
The protein encoded by this gene is a member of the keratin gene family. As a type I hair keratin, it is an acidic protein which heterodimerizes with type II keratins to form hair and nails. The type I hair keratins are clustered in a region of chromosome 17q12-q21 and have the same direction of transcription. [provided by RefSeq, Jul 2008], miscellaneous: There are two types of hair/microfibrillar keratin, I (acidic) and II (neutral to basic), similarity: Belongs to the intermediate filament family.,

## Research Area

## Image Data



Western blot analysis of KRT37/38 Antibody. The lane on the right is blocked with the KRT37/38 peptide.



Western blot analysis of the lysates from HepG2 cells using KRT37/38 antibody.

## Note

**Product Name: Keratin 37/38 Rabbit Polyclonal  
Antibody**  
**Catalog #: APRab12980**



---

For research use only.