

## Summary

<b>Production Name</b>	KEPI Rabbit Polyclonal Antibody
<b>Description</b>	Rabbit Polyclonal Antibody
<b>Host</b>	Rabbit
<b>Application</b>	WB,IHC-P,IF-P,IF-F,ICC/IF,ELISA
<b>Reactivity</b>	Human,Mouse,Rat

## Performance

<b>Conjugation</b>	Unconjugated
<b>Modification</b>	Unmodified
<b>Isotype</b>	IgG
<b>Clonality</b>	Polyclonal
<b>Form</b>	Liquid
<b>Storage</b>	Store at 4°C short term. Aliquot and store at -20°C long term. Avoid freeze/thaw cycles.
<b>Buffer</b>	Liquid in PBS containing 50% glycerol, 0.5% BSA and 0.02% New type preservative N.
<b>Purification</b>	Affinity purification

## Immunogen

<b>Gene Name</b>	PPP1R14C PPP1R14C; KEPI; Protein phosphatase 1 regulatory subunit 14C; Kinase-enhanced PP1 inhibitor; PKC-potentiated PP1 inhibitory protein; Serologically defined breast cancer antigen NY-BR-81
<b>Alternative Names</b>	
<b>Gene ID</b>	81706.0
<b>SwissProt ID</b>	Q8TAE6.The antiserum was produced against synthesized peptide derived from human PPP1R14C. AA range:51-100

## Application

<b>Dilution Ratio</b>	WB 1:500-1:2000, IHC-P 1:100-1:300, IF-P/IF-F/ICC/IF 1:200-1:1000, ELISA 1:20000.Not yet tested in other applications.
-----------------------	--

**Product Name: KEPI Rabbit Polyclonal Antibody**  
**Catalog #: APRab12978**



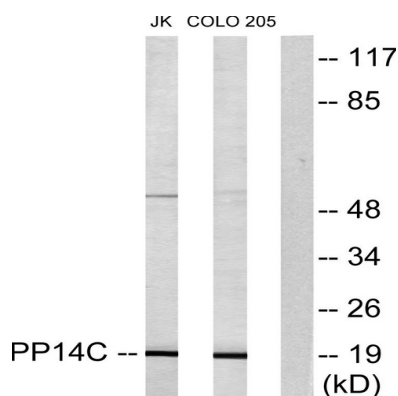
**Molecular Weight** 20kDa

## Background

The degree of protein phosphorylation is regulated by a balance of protein kinase and phosphatase activities. Protein phosphatase-1 (PP1; see MIM 176875) is a signal-transducing phosphatase that influences neuronal activity, protein synthesis, metabolism, muscle contraction, and cell division. PPP1R14C is an inhibitor of PP1 (Liu et al., 2002 [PubMed 11812771]).[supplied by OMIM, Feb 2010],function:Inhibitor of PPP1CA. Has over 600-fold higher inhibitory activity when phosphorylated, creating a molecular switch for regulating the phosphorylation status of PPP1CA substrates and smooth muscle contraction.,similarity:Belongs to the PP1 inhibitor family.,tissue specificity:Detected in breast cancer.,

## Research Area

## Image Data



Western blot analysis of lysates from Jurkat and COLO205 cells, using PPP1R14C Antibody. The lane on the right is blocked with the synthesized peptide.



Western Blot analysis of various cells using KEPI Polyclonal Antibody diluted at 1: 1000

**Product Name: KEPI Rabbit Polyclonal Antibody**  
**Catalog #: APRab12978**

---



**Note**

For research use only.